

INSTALLATION INSTRUCTIONS

Disassembly

1. Open hood and remove stock acoustic cover (1). Pull up as you work your way around from corner to corner then forward. See figure 1.

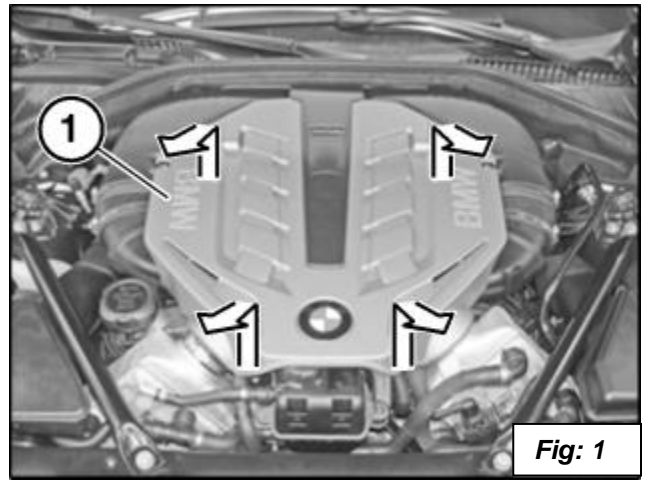


Fig: 1

2. Remove the air box lids. Loosen clamps (1) and slide hose forward off of air box. Disconnect the wire to the air mass meter (2). You can leave the clamp (3) connected. See figure 2. Remove the 8 screws along line (1) and remove lid (2). See figure 3.

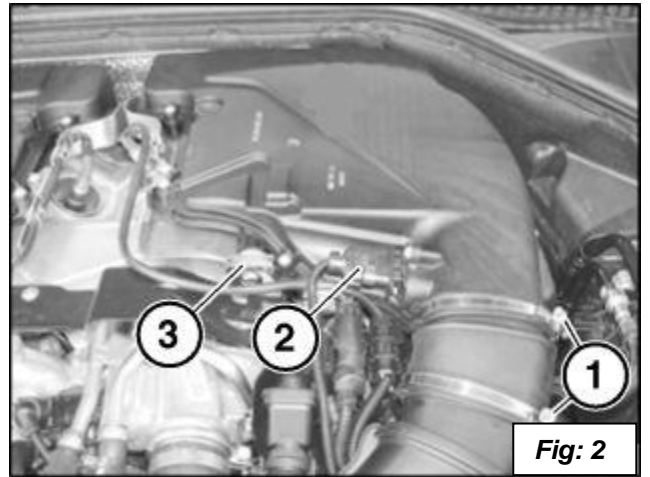


Fig: 2

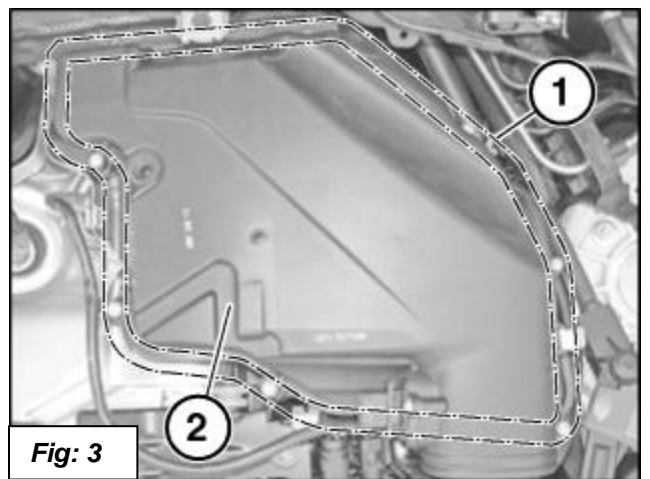


Fig: 3

3. Remove the rubber seal (1) covering the bolts and rivets by pulling it up out of its clips. See figure 4.

- 4.

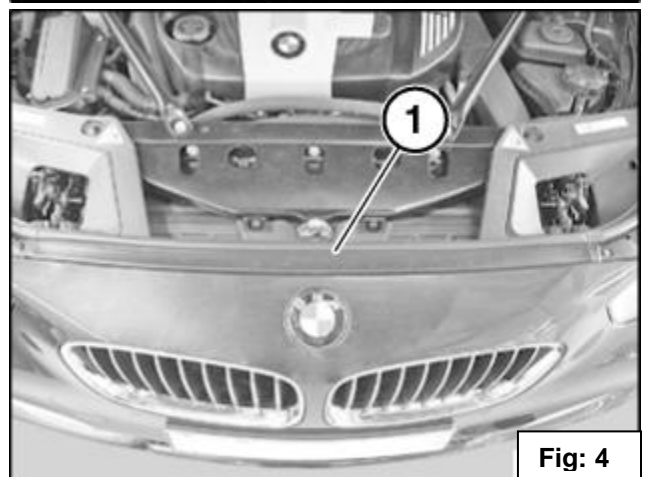
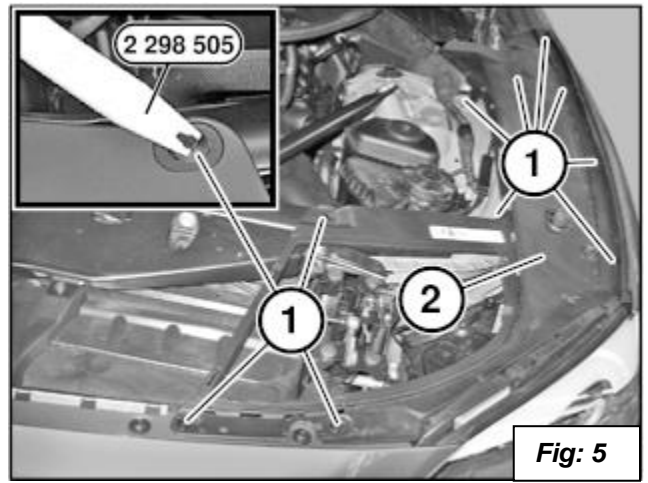
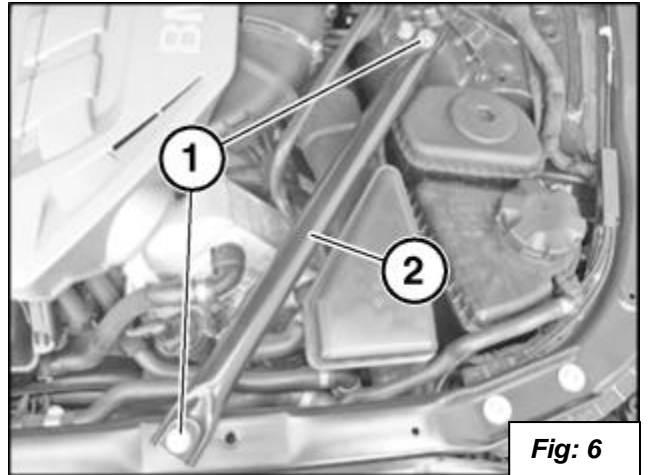


Fig: 4

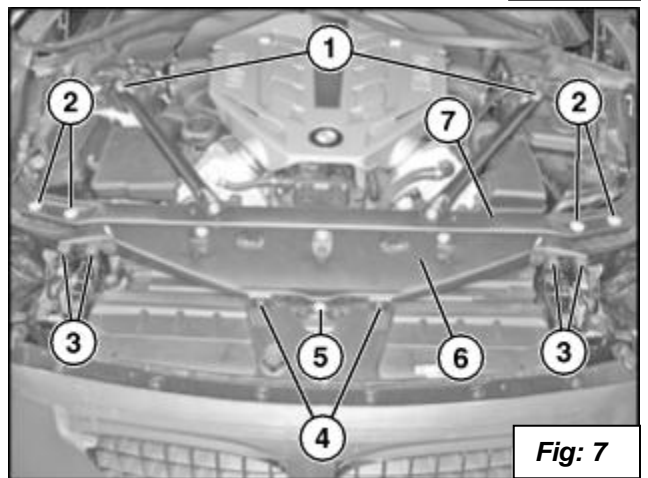
4. Remove the plastic side covers by removing the rubber engine seal and then lever out the expanding rivets (1) using BMW special tool 2 298 505. Remove cover (2). See figure 5.



5. Unscrew the bolts (1) and remove the two cross braces (2) as shown in figures 6 and 7.

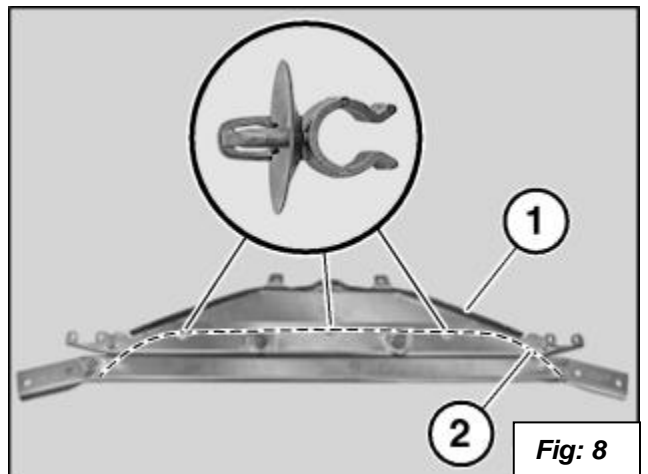


6. Remove the radiator support / cross brace assembly. Unscrew the bolts in positions (2), (3), (4) and (5). Leave the two braces (6) and (7) bolted together. See figure 7.



7. Lift up the cross brace assembly slightly so you can unclip the cable (2) from the cross brace assembly (1). See figure 8.

- 8.



8. Remove the front bumper. Unscrew the all the bolts and screws at the top and bottom of the bumper panel as shown by the arrows in figure 9.

9. Remove the screws (1) from the wheel arch inner fender then pull inner fender back so you can get too the two screws (2) holding the bumper to the fender. See figure 10.

10. Remove bumper cover straight towards front with aid of a 2nd person. If necessary, disconnect additional plug-in contacts and feed out cable.

Warning! Do not pull bumper out sideways -- risk of damage.

Modify Parts – Air Box Tube

11. Remove the carbon filters from the air box lids. Use a pick tool as shown to pry the tabs around the nipple as you lift on the corner of the filter. Start with the highest tab and work your way around keeping slight pressure by lifting the filter, do one tab at a time. See figures 11 and 12.

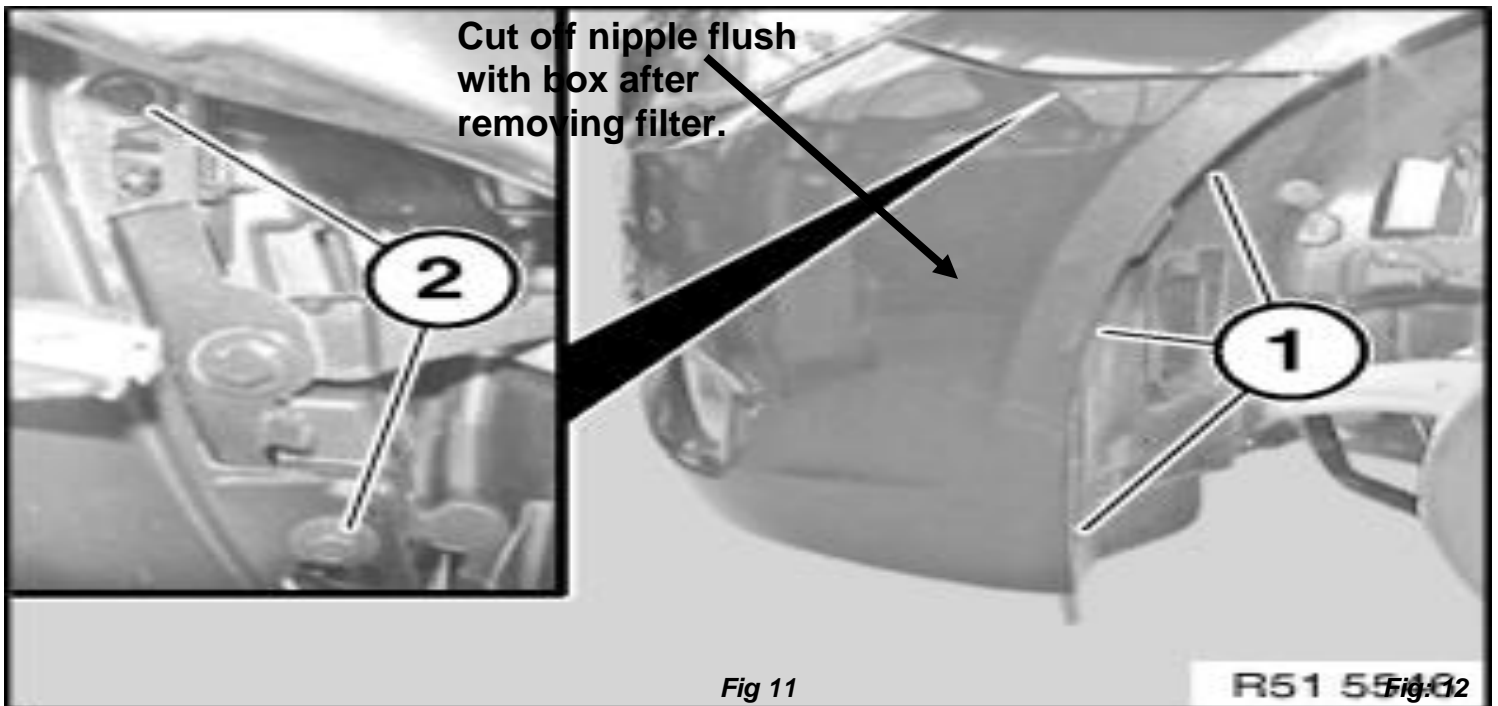


Fig 11

- **Note:** For racing purposes, removing the charcoal filter will add power. This removal will not affect the vehicle's ability to meet a tailpipe emissions test that is sometimes performed by the sanctioning body after a race. However, the charcoal filter is part of the evaporative emissions system, and as such, it must be retained on any pollution-controlled motor vehicle used upon a public highway. **Warning! Cut off the retaining nipple for the charcoal filter so it does not crack off and go into the turbo.**
12. Trim and sand the support ribs as shown to make room for the inlet tube. Use a plastic-cutting pliers or flush side cutting pliers to trim the ribs. The third rib back does not need to be cut all the way to the bottom, leave about 1/2". Sand the ribs flush with the side. See figures 13, 14, 15 and 16.

Fig: 13

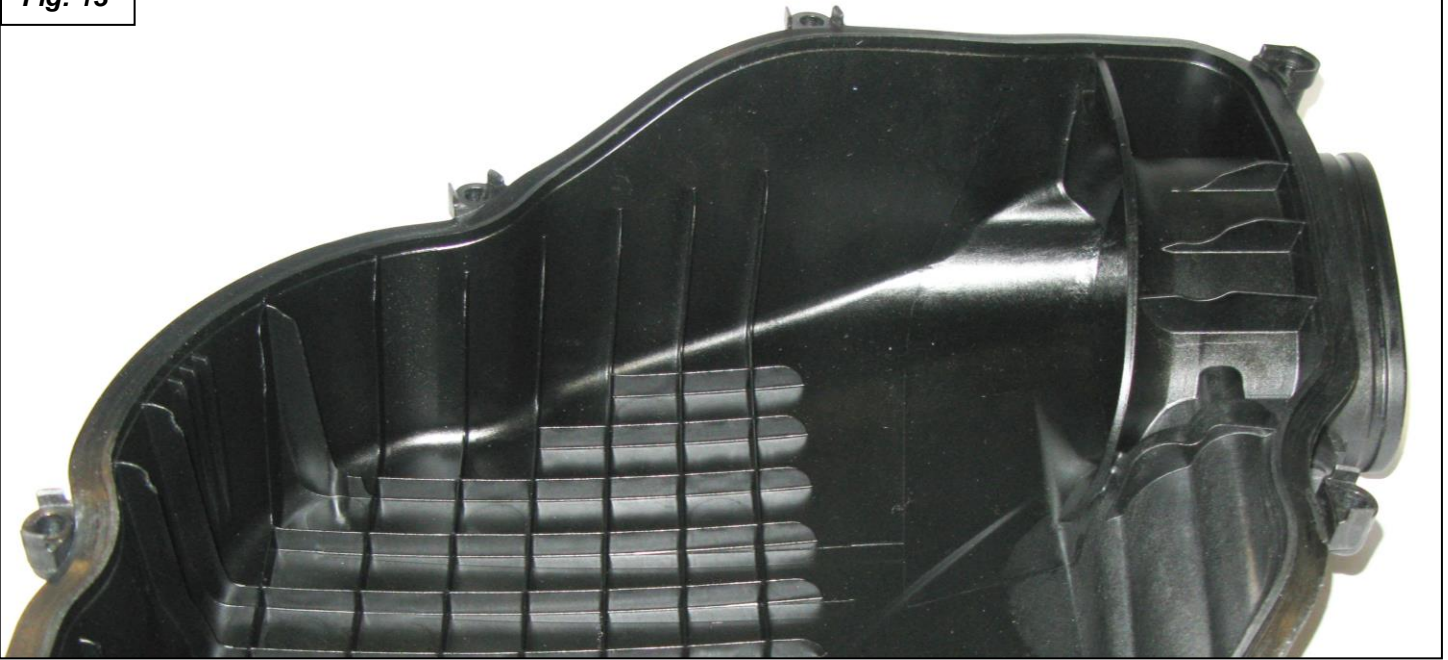


Fig: 14

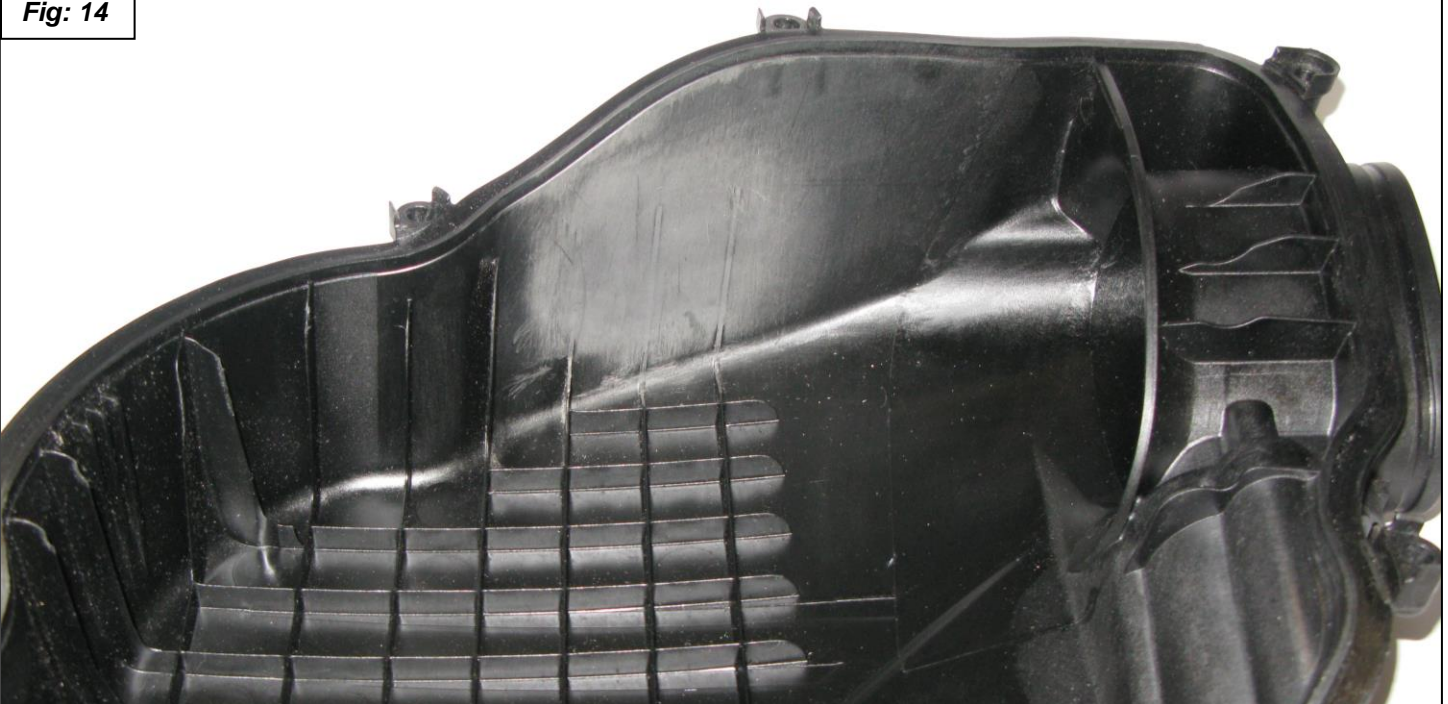


Fig: 15

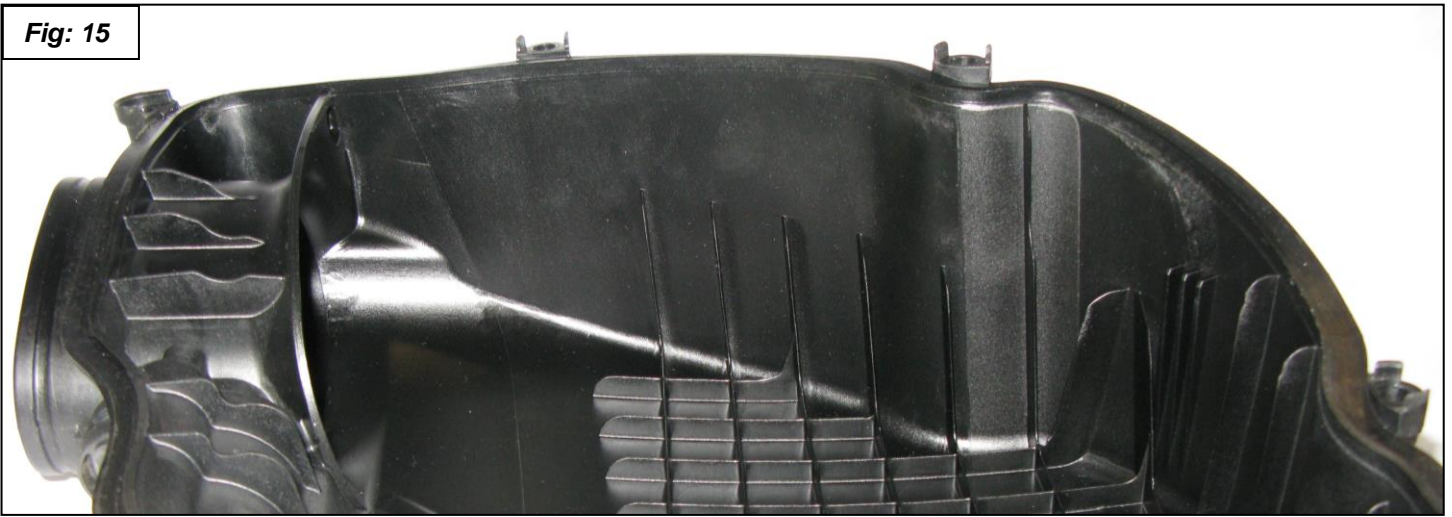
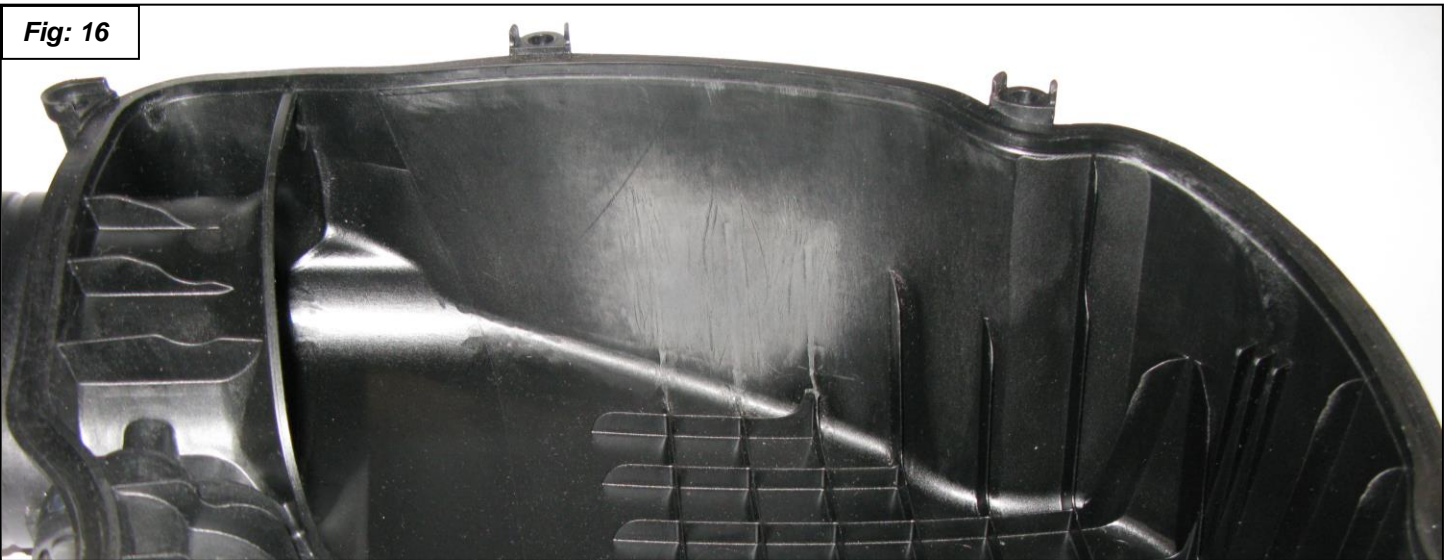


Fig: 16



13. Fit the hole marking template into the air boxes as shown and use an automatic center punch to mark the holes. There is a right and left template. Line up the top edge with the air box and the side with the rib. Clamp the template to the air box. See figures 17, 18 and 19. With a 1/16" drill bit you can drill the pilot hole thru the template.

Fig: 17



Fig: 18

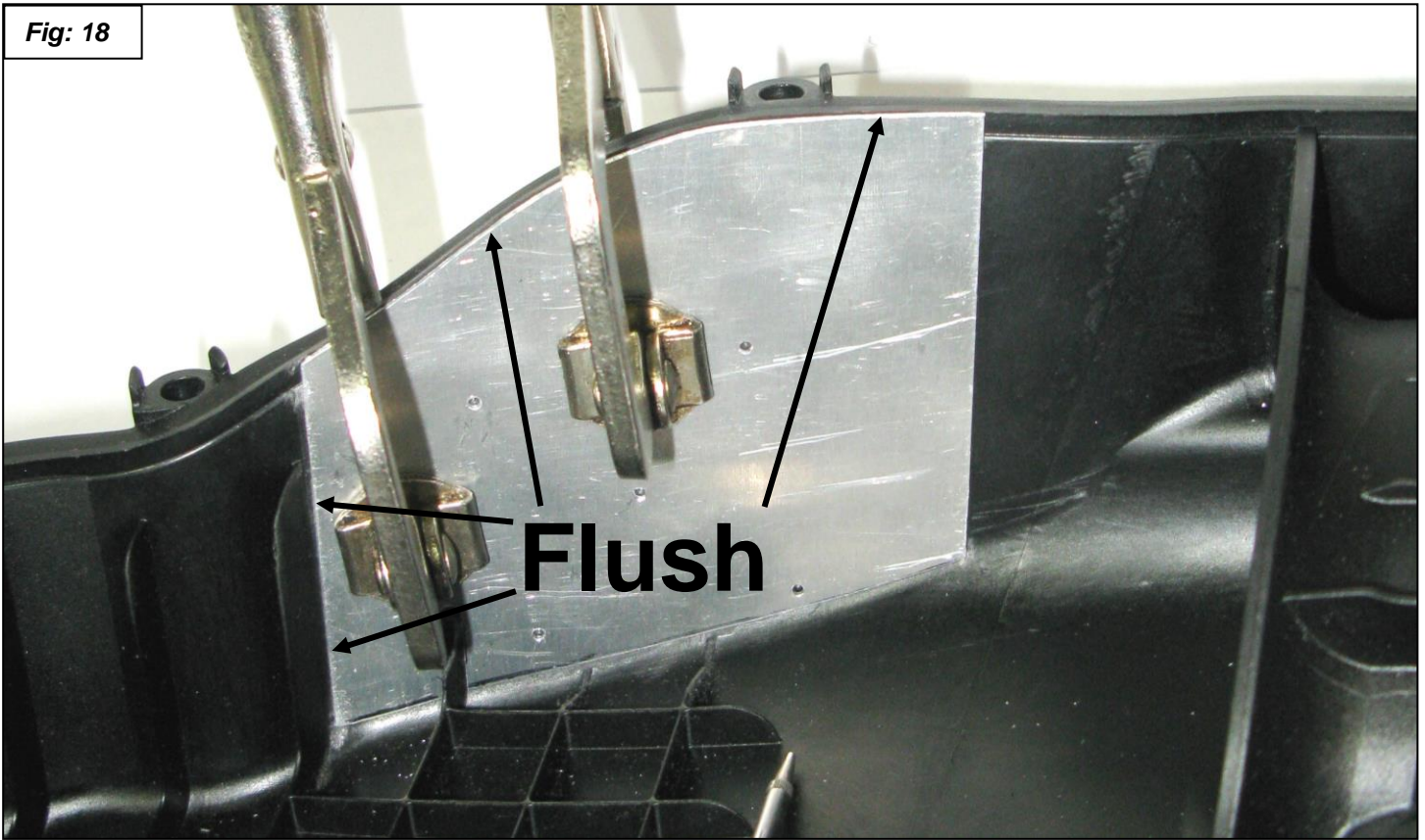
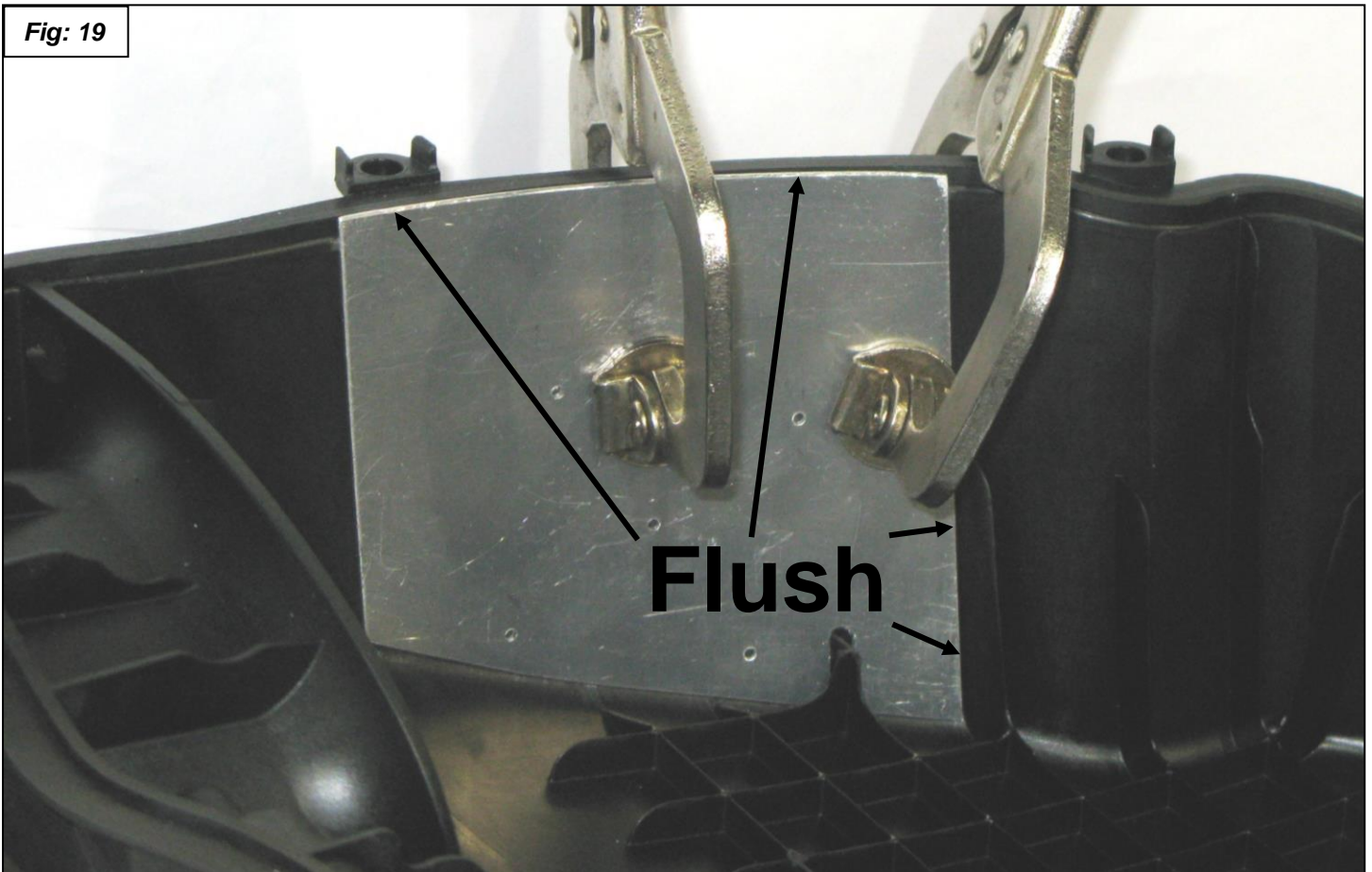


Fig: 19



Make sure that the template is up against the side rib and flush with the top edge of the air box.

14. Drill pilot holes thru from the inside of the air box lid. See figure 20.

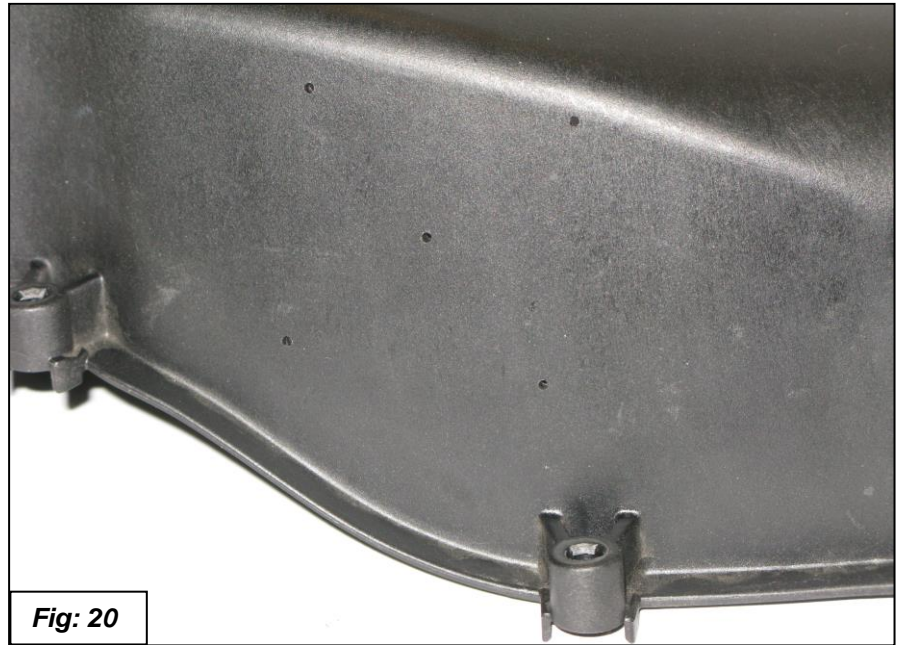


Fig: 20

15. Drill the 5 holes out to 1/4" as shown. See figure 21.



Fig: 21

16. Drill out the center hole to 1-13/16" with a hole saw. Deburr the holes. See figure 22.



Fig: 22

- 17.

17. Put the gaskets onto Air Box Tubes. Assemble the Air Box Tubes into the air box. Slide the Air Box Adapter Plate over the end of the tube and fasten to the tube base with the M5 x 16 button head screws. Start the 3 easy screws first then let the assembly drop into the air box, then thread in the final screw. See figures 23 and 24.

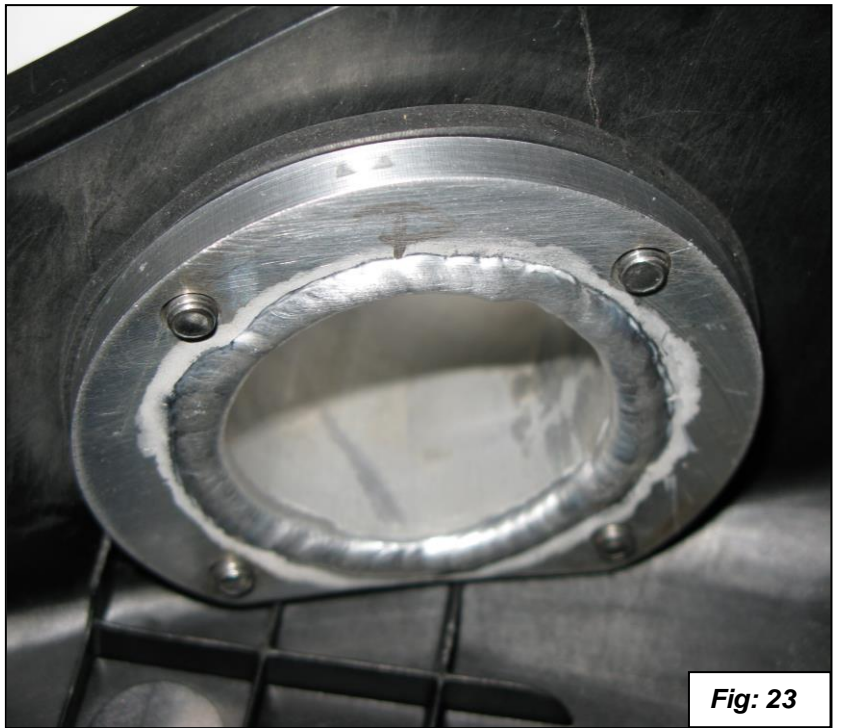


Fig: 23



Fig: 24

Modify Parts – Air Filter Frame

18. The Air Filter Frames mount on top of the shroud in front of the radiator. You will cut two holes and mount the frames to the shroud. The filters fit into the frames then the Dinan carbon fiber air boxes screw to the frames.

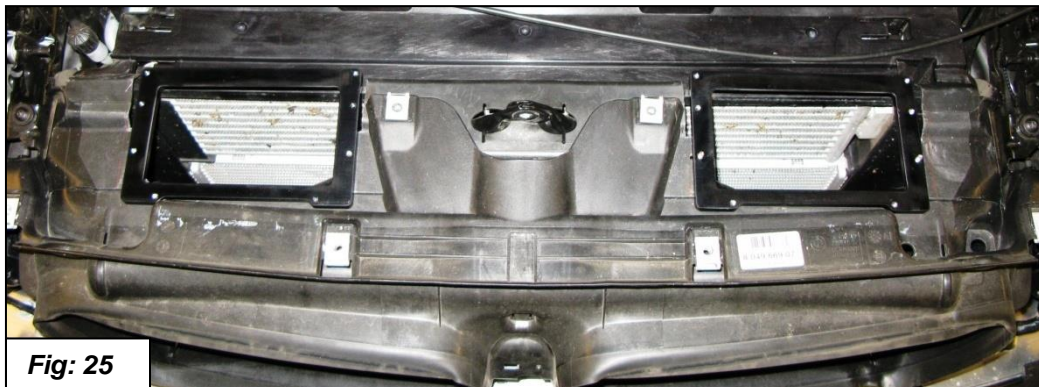
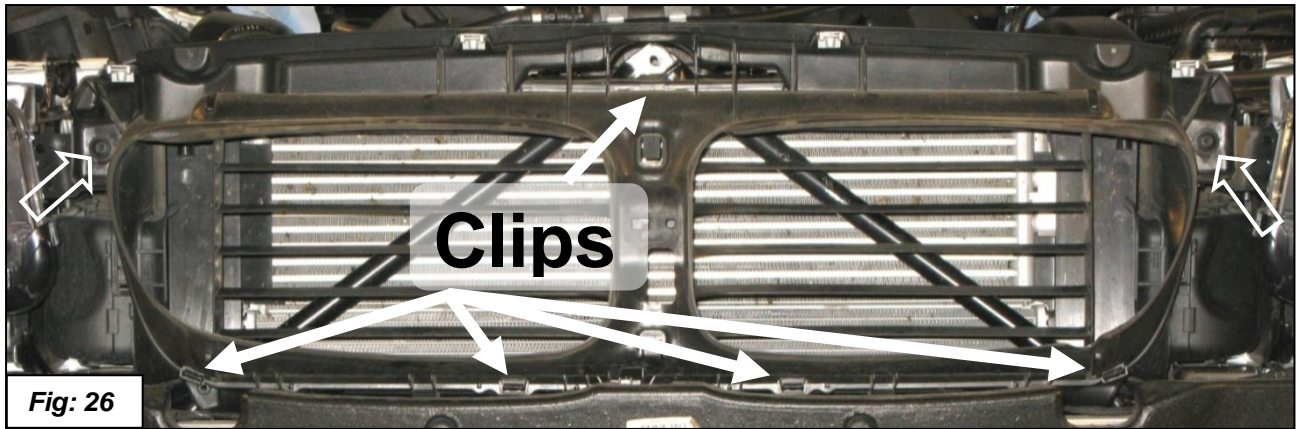
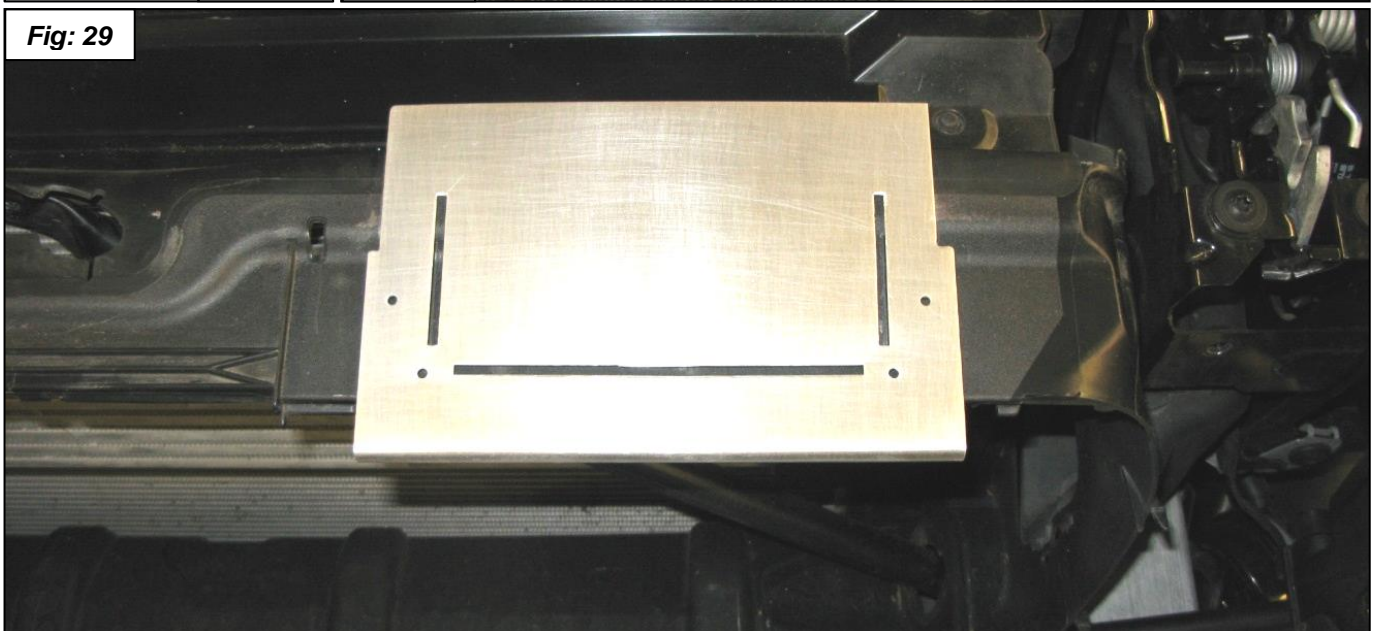


Fig: 25

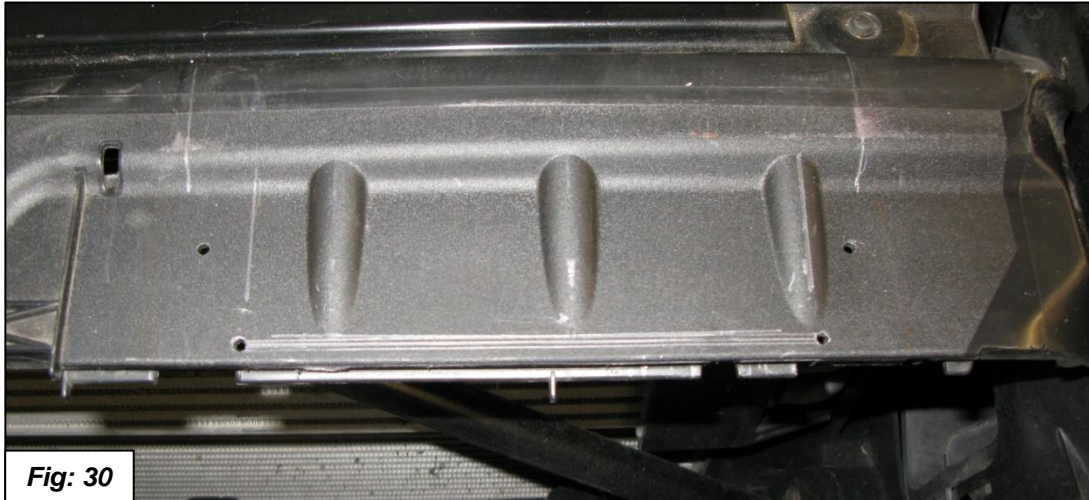
19. Start by removing the outer air duct. Remove the two screws. Unlatch the five clips and remove the outer air duct. See figure 26. Slide out the air diffuser.



20. Install the Air Filter Mount Template by inserting the mounting tabs into the two slots as shown. See figures 27, 28 and 29.



21. Drill through the four holes in the template with a 1/8" drill bit. Scribe a line through the three slots of the template. See figures 29 and 30. Repeat on other side.



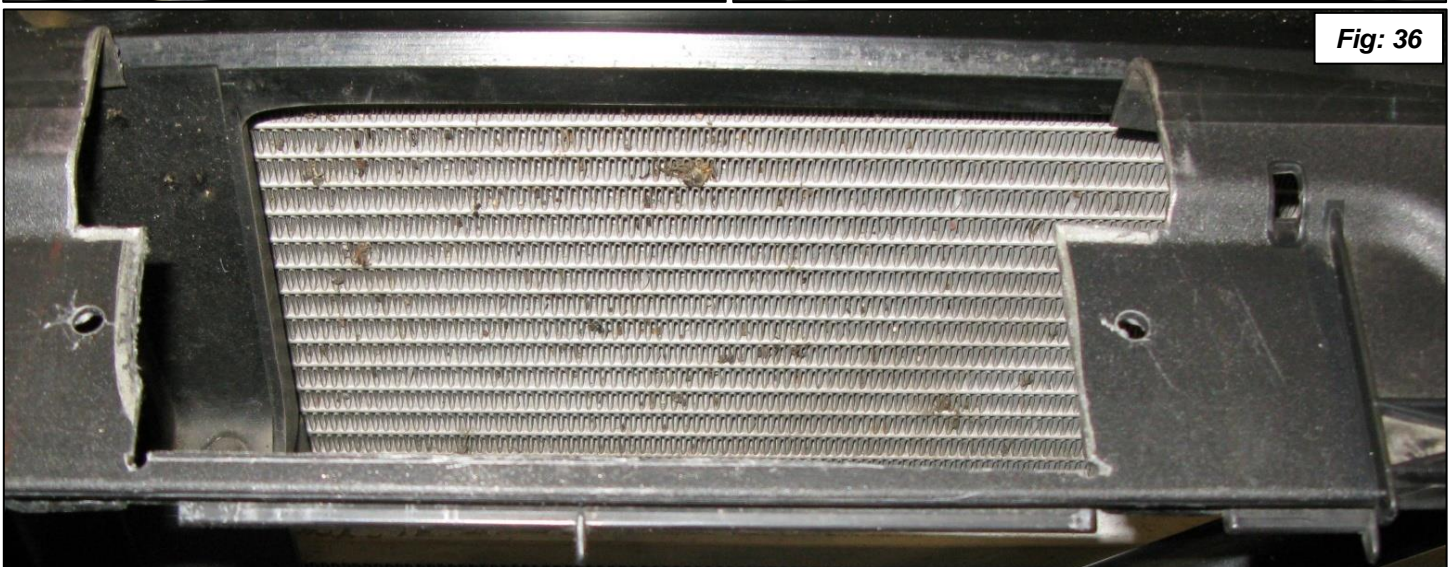
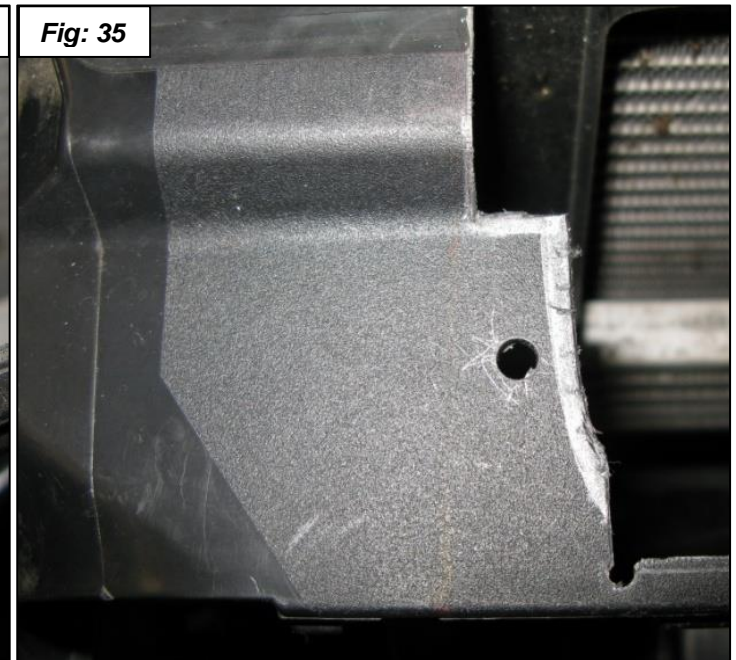
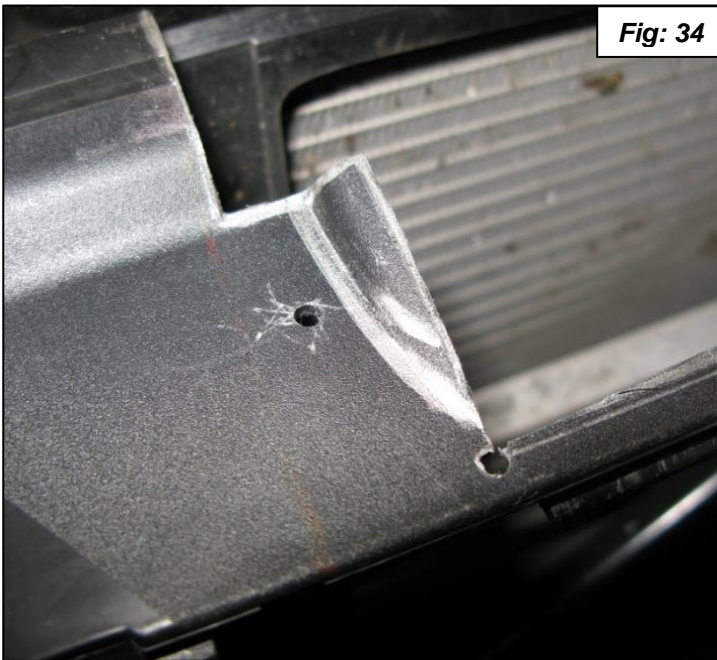
22. Draw a line as shown in figure 31 to help you in cutting the hole for the Air Filter Mount. Repeat on other side.



23. Cut out the holes for the Air Filter Mounts. Use aviation snips and a die grinder with a cut off wheel. First cut the back to front with aviation snips as shown in figure 32.



24. Mark the raised section on the outer side of each cut out as shown in 33 and 34. Cut out the rest of the holes with a die grinder with cut off wheel. Cut from side to side first then cut off the raised section. Drill out the mounting holes to 13/64". Deburr the edges of the plastic. See figures 33 thru 36.



25. Install the air filter frames using the 4mm x 10mm screws and plastic washers. The frame rests on top of the shroud and gets bolted from the underside. See figures 37 and 38.



Fig: 37



Fig: 38

Modify Parts – Radiator Support / Joint

26. Trim the radiator support joint as shown in figures 39 thru 47. First: cut the front of the upper side. Scribe a line down 3/16" from the edge. Go from the flange to the half round notch. Cut away the metal with aviation snips or a die grinder with cut off wheel. File and sand smooth. Touch up paint the cuts.



Fig: 39

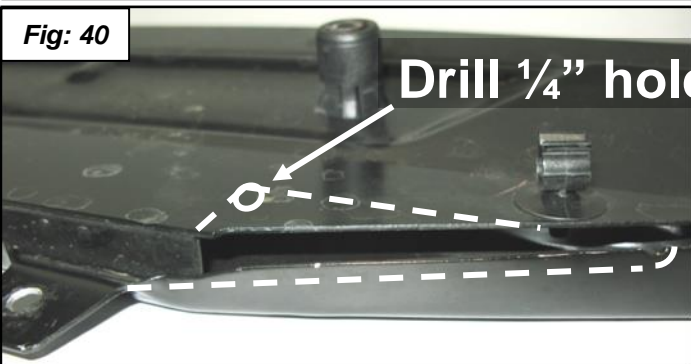


Fig: 40

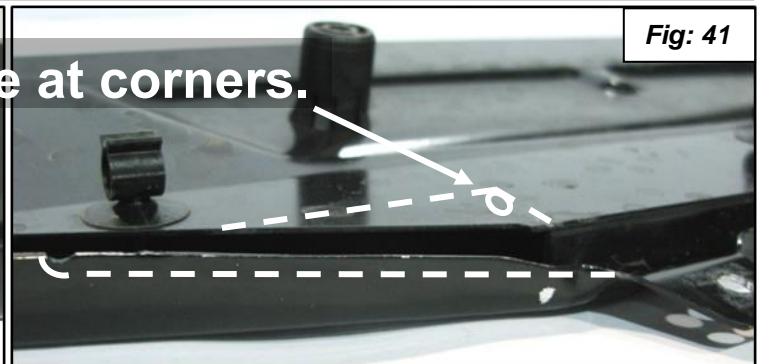


Fig: 41

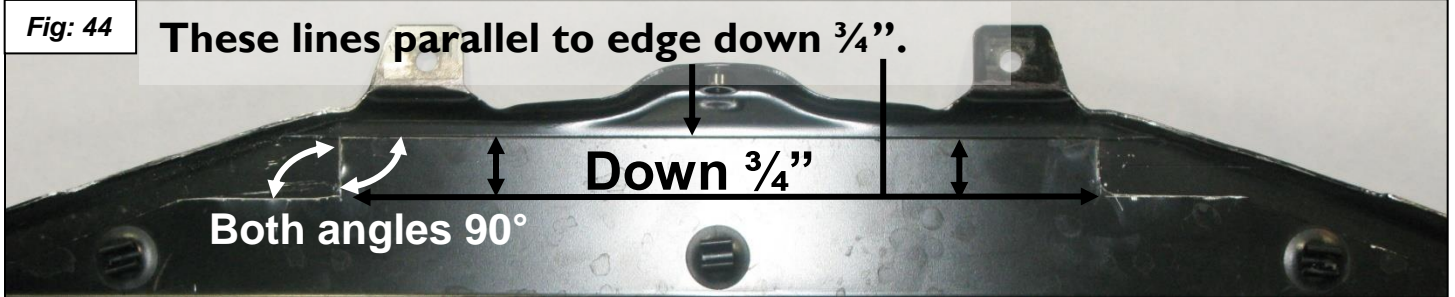


Fig: 42



Fig: 43

27. Second: cut a notch in the lower half. Scribe a line 90° from top edge $\frac{3}{4}$ " down, then scribe a line parallel to the top edge out to the notch in the upper half. Drill a $\frac{1}{4}$ " hole in the corner where the two lines intersect. Cut to the hole along the lines with metal aviation snips or a die grinder with cut off wheel. File and sand smooth. Touch up paint the cuts.



Assembly

28. Reassemble the air diffuser and outer air duct. Latch the four clips and install the two screws. Look back to figure 26 Step 19.

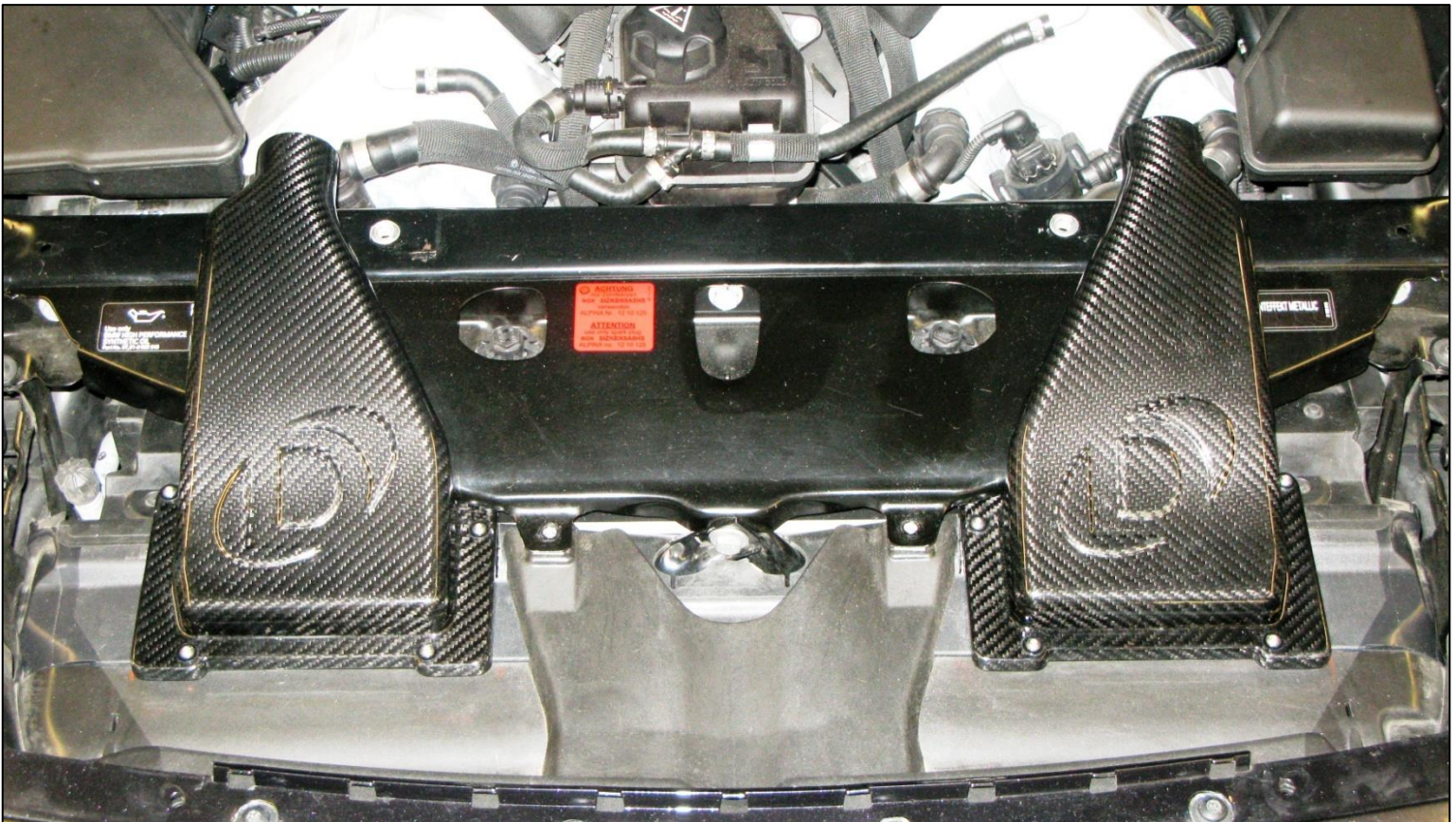
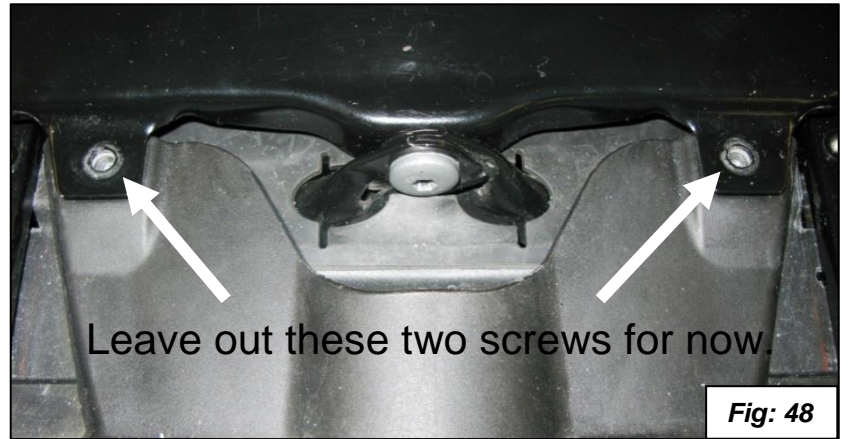
29. Install the radiator support joint in reverse order of removal. Leave the two screws out for now. See figure 48.

30. Install the bumper in reverse order of removal.

31. Install the air box lids in reverse order of removal.

32. Install the acoustic cover.

33. Install the air filters and carbon fiber air box lids using the 4mm x 16mm screws and plastic washers. Slide the air boxes over the filters from the outside towards the center. If needed push down on the center of the air duct when sliding the carbon fiber air box lids over the air filters. Now install the two screws holding the radiator support joint to the air duct that you left out in step 31. See figure 49.

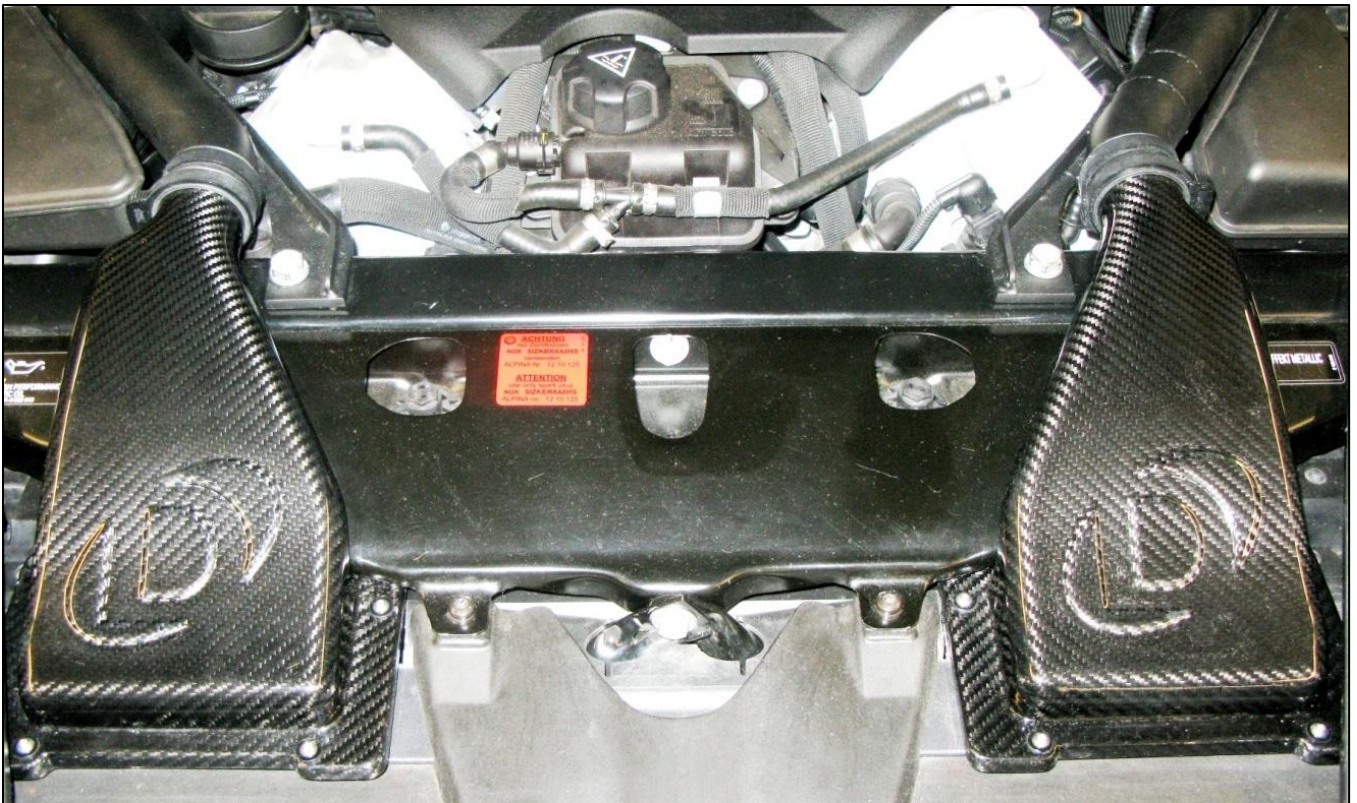


34. Install the plastic side covers in reverse order of removal.

35. Install the hoses without the convolute onto Tube/Strut with the snap grip clamps pointing down as shown in figure 50.

36. Install the Tube/Struts by sliding the front end into the hose on the carbon fiber air box lid. The longer bolt goes in the back position on the strut tower. Make sure the Tube Struts are positioned evenly. See figure 51. Torque to BMW specifications.





37. Install the snap grip clamps pointing out as shown in figure 52 and 53.

Warning: Do not over tighten the hose clamp on the carbon fiber air box lid! Only minimal clamp pressure is needed to seal the hoses. Two to three clicks of the snap-grip clamps with pliers is all that is needed.

There are two diameters of hose clamps. The small clamps go between the Tube/Struts and the carbon fiber air box lids. The large diameter clamps go on all the back hose's with convolutes.

The following photo's show old style metal clamps, please substitute with the new style Snap-Grip clamps.

38. Install the single hump hose on the driver's side Tube/Strut as shown in figure 54. Pull the hose so the edge of the convolute hump is up against the bead on the tube.

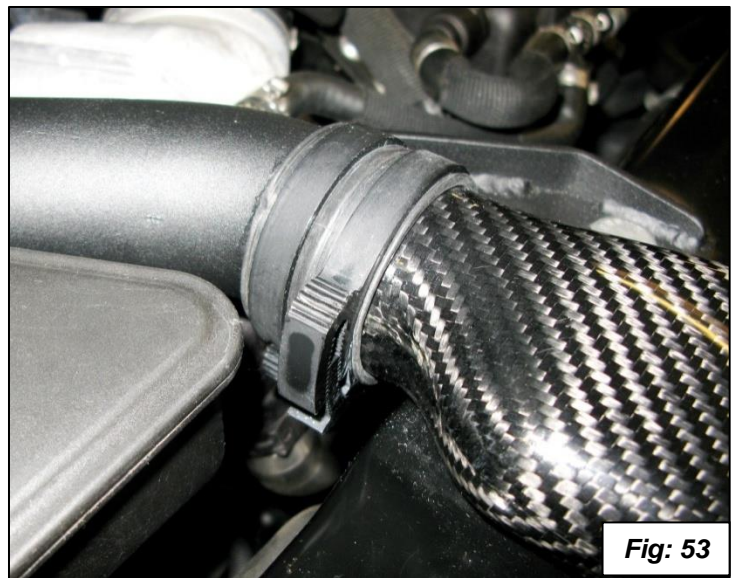


Fig: 53



Fig: 54

39. Install a three hump hose on the passenger's side Tube/Strut as shown in figure 55.

40. Install the three hump hose's on the Air Box Tubes as shown in figures 56 and 57.



Fig: 56

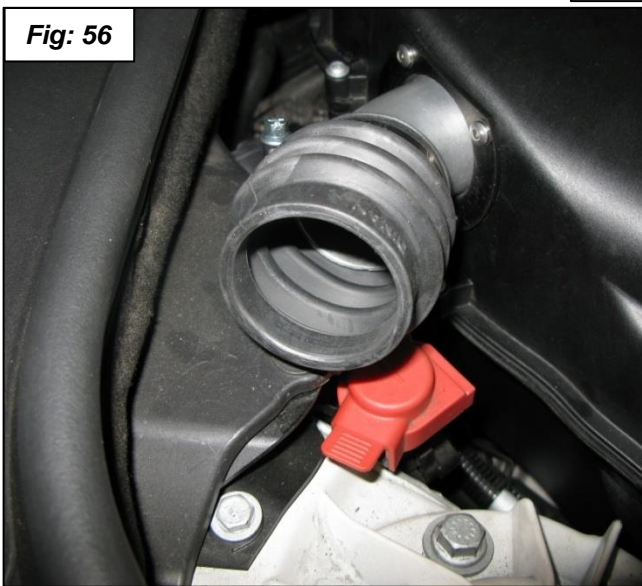
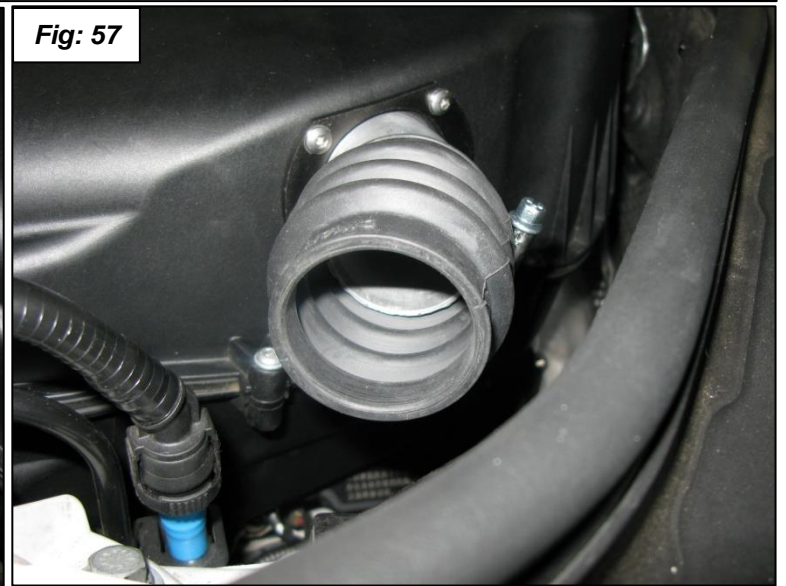
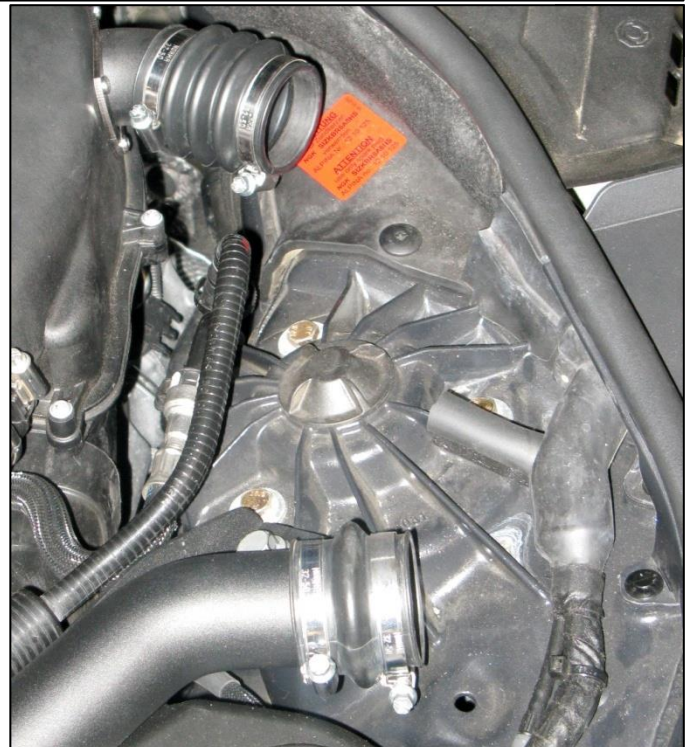


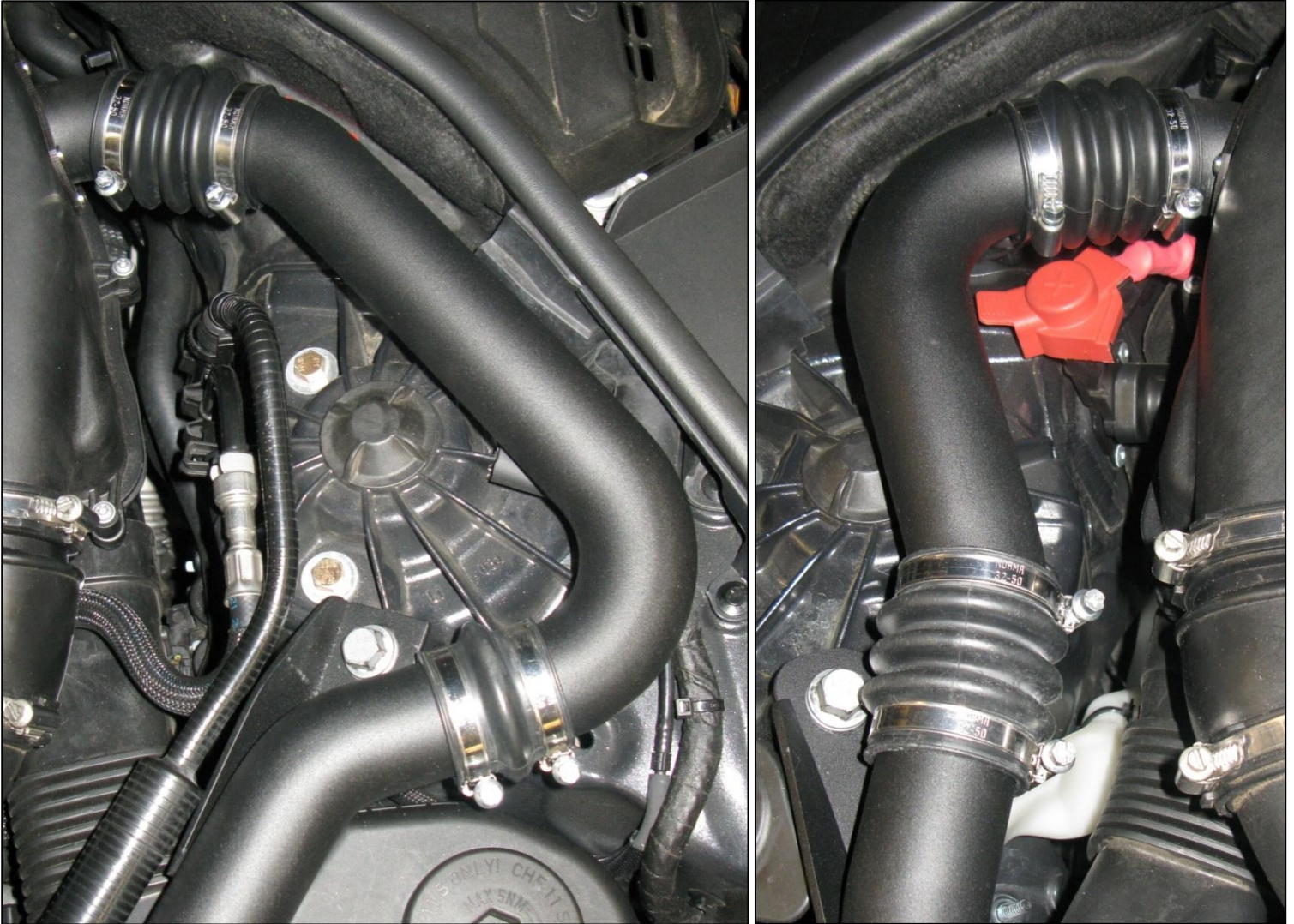
Fig: 57



41. Install the edge trim as shown in figure 58. It goes on the 4th rib from the bolt shown and just before the next bolt.



42. Install the Center tube on the driver's side by pushing the curved end into the one hump hose first then slide the three hump hose over the tube. Position for best fit and tighten clamps. See figure 59.



43. Install the Center tube on the passenger side by pushing the curved end into the back three hump hose first then slide into the front three hump hose over the tube. Position for best fit and tighten all clamps. See figure 60.

44. Push the tip of the cable retainer up to prevent it scratching the carbon fiber air box lids when you close the hood. Make sure hood is adjusted properly and is not too low. See figure 61.

NOTE:

- We recommend replacing the air filters every 30,000 miles. The Dinan part number is D403-0018



Fig: 61

PARTS LIST

<u>Qty</u>	<u>Part Number</u>	<u>Description</u>
1	D763-0147	Hardware Kit
4	D671-0147	M4 Button Head
8	D671-0143	M4 Button Head
12	D671-0163	Nylon Washer Black
8	D672-0005	M5 Button Head; Trimmed
4	D763-0070	Airbox Lid Clamps
8	D763-0071	Nylon Intake Tube Clamps
1	D763-0148	Edge Trim
