

[034Motorsport Lower Supercharger Pulley, 179mm, B8 3.0T](#)

[034Motorsport Lower Supercharger Pulley, 190mm, B8 3.0T](#)

[034Motorsport Lower Supercharger Pulley, 207mm, B8 3.0T](#)

**034 MOTORSPORT**

034Motorsport's Lower Supercharger Pulley is the new standard in performance and durability. This pulley was engineered with performance, light weight, and discrete good looks, in mind. Manufactured from billet 6061-T6 aluminum, for strength and long lasting reliability.

**Installation Spiciness Rating: MEDIUM**

Installation of your 034Motorsport Lower Supercharger Pulley is a straightforward process that will take approximately 3 hours to complete.

**Supplied Parts:**

- 034Motorsport Billet Lower Supercharger Pulley
- Continental Crank Pulley V-belt
- (8x) M8x25mm socket head cap screws

**Tools Needed:**

- T30 Torx
- 10mm triple square
- 11" extension
- 6mm Allen wrench
- 16mm wrench
- Phillips Screwdriver
- (2x) M10x120mm bolt
- Blue Loctite

Getting Started

Confirm you have received all the parts included with your purchase by reading the complete guide, if there are missing components, please contact:

[customerservice@034motorsport.com](mailto:customerservice@034motorsport.com)

#### About This Guide

This Install Guide documents the installation process of the 190mm pulley (179mm and 207mm are the same), on a 2014 Audi S4. There may be minor differences in the engine bay of other 3.0T (supercharged) vehicles, depending on specific vehicle, market, options, etc.

#### Step 1

Remove the front splash shield and front bumper cover.



#### Step 2

Release coolant system pressure by very slowly loosening the coolant reservoir cap. Once pressure is released, disconnect the overflow hose.



#### Step 3

If you have something that can be used, cap the overflow hose to prevent leaking.



**Step 4**

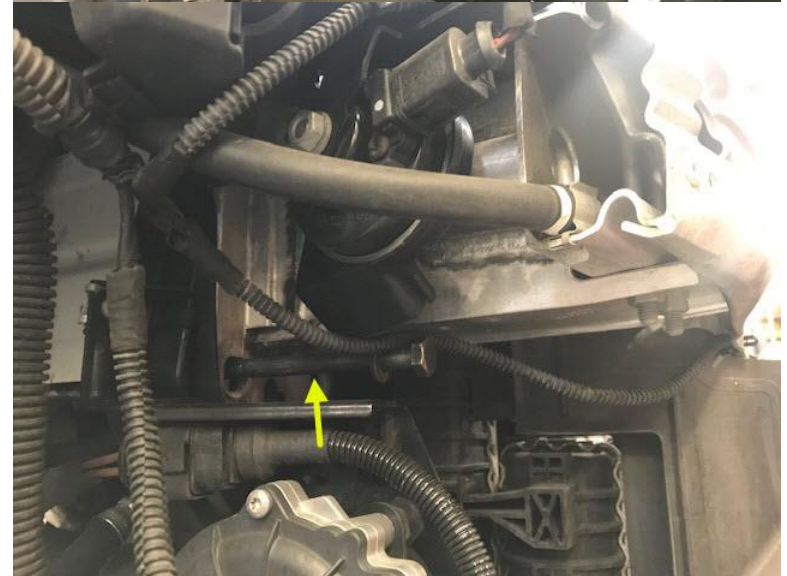
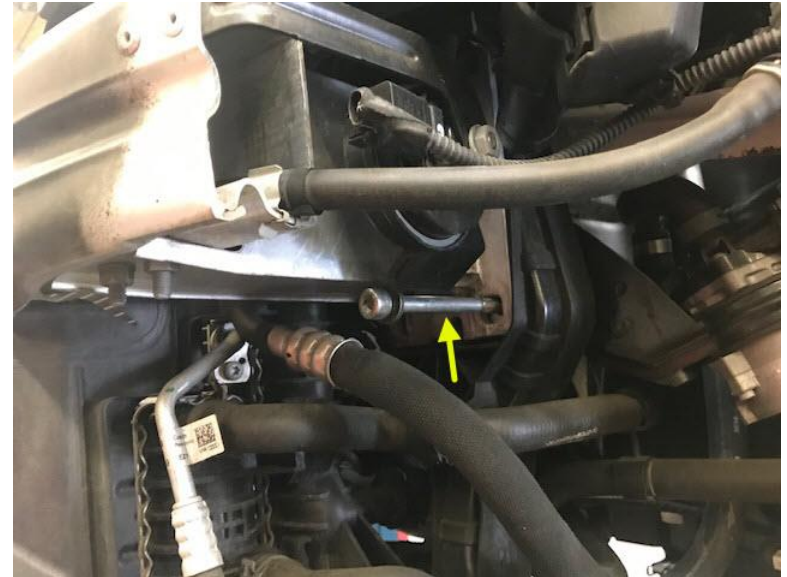
Using a T30 Torx bit, remove the two screws securing the core support to the core support brackets.

**Step 5**

Using a 16mm socket, remove the 6 bolts (3 each side) securing the bumper crash bar brackets to the body.

**Step 6**

Install M10x110mm bolts into each of the outside lower bolt holes in the crash bar support.



### Step 7

Using a T30 Torx, remove the 2 screws securing the radiator support to the body.



### Step 8

Put radiator support into maintenance position (pull out ~4")



### Step 9

You will now have space to perform the pulley swap.



### Step 10

Using a 16mm wrench, turn the belt tensioner center bolt clockwise to remove tension from the belt. While still holding tensioner in loose position, remove the belt.

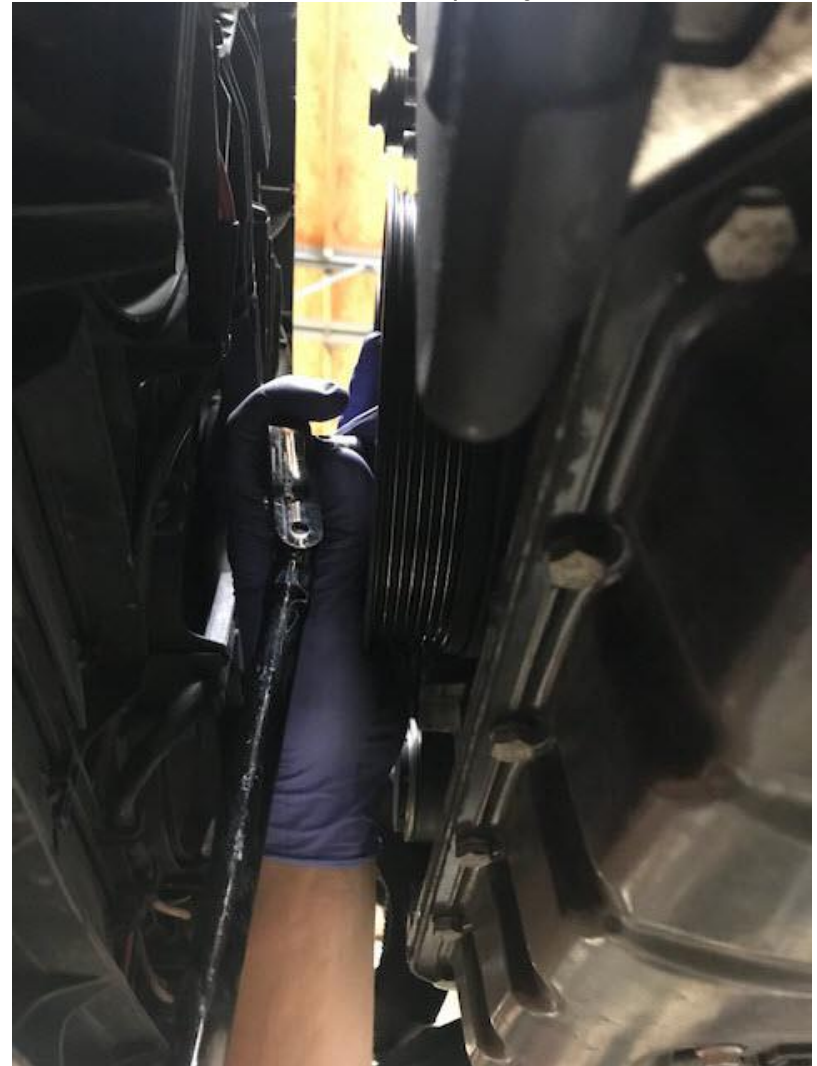


**Step 11**

Repeat process for inner belt. The tensioner is tucked behind the two coolant pipes, but can be loosened with an open-end wrench.

**Step 12**

Using an M10 triple square, remove the 8 bolts securing the stock crank pulley.



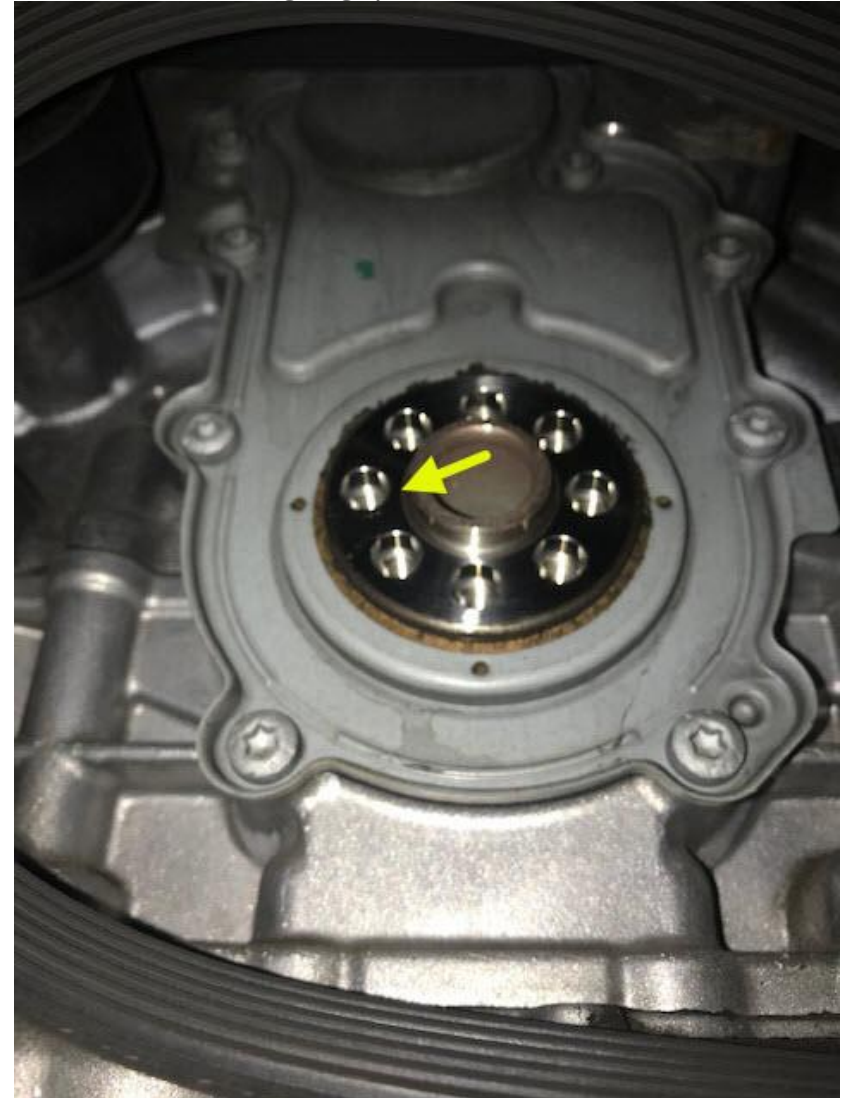
### Step 13

Carefully remove the crank pulley, as straight as possible, from the crankshaft snout and straight down to easily determine offset hole location for easier installation of new pulley. There are two pips on either side of the offset hole, as well as a paint mark on the outside surface of the pulley.



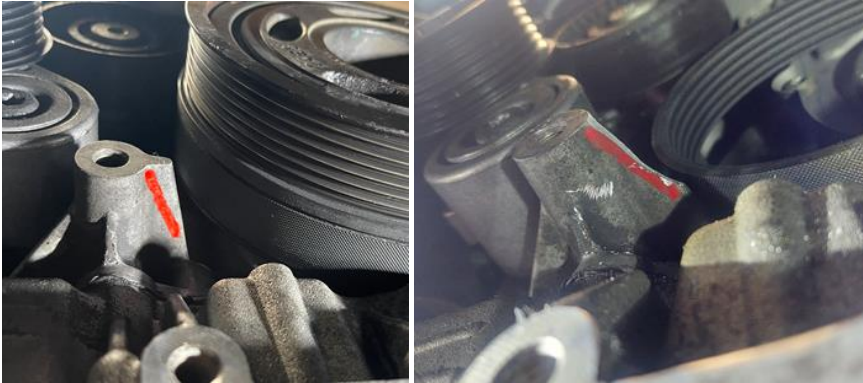
### Step 13 cont.

If you lose track of which hole was offset, you can tell by looking at the end of the crankshaft. That hole will have a little larger gap to the center snub.



#### Step 14

For some 190mm and all 209mm pulleys, some light grinding will be required to make clearance for the larger diameter. We used a burr grinder to notch the extrusion on the block.



#### Step 15

Locate the offset hole in the 034Motorsport Billet Lower Supercharger Pulley. On the back, there is an X marking it. On the front, the chamfer is a little larger.



#### Step 16

Apply a small amount of blue Loctite to the end threads of the supplied M8x25 socket head cap screws.



#### Step 17

Put the 034Motorsport Billet Lower Supercharger Pulley into position, aligning the offset hole as necessary. Placing a bolt in the offset hole while installing the pulley will help with alignment.



**Step 18**

Install the M8x25 socket head cap screws finger tight. Once all are installed, torque to **30Nm** (22 ft-lbs).

**Step 19**

Reinstall inner belt removed in Step 11.

**Step 20**

Install supplied supercharger belt (reverse of Step 11).

**Step 21**

Push radiator support back into position. Using a T30 Torx bit, reinstall the two screws securing the top of the core support (removed in Step 5). Torque to **10Nm** (7 ft-lbs).

**Step 22**

Remove M10x110mm bolts and reinstall OE M10 bolts removed in Step 3. Torque to **30 Nm** (22 ft-lbs).

**Step 23**

Using a T30 Torx bit, reinstall the two screws securing the core support brackets (removed in Step 2). Torque to **10Nm** (7 ft-lbs).

**Step 24**

Re-connect coolant reservoir overflow line.

**Step 25**

Reinstall front bumper and undercar splash shield.

**Step 26**

You are finally done!

Enjoy the added horsepower and torque (after an appropriate tune has been installed).