

034Motorsport X34 Full Open Box Intake System, 8V RS3, 8S TTRS



034 MOTOR SPORT

034Motorsport's X34 Full Intake System for the 8V.5 RS3 and 8S TTRS is the new standard in performance. This system was engineered with performance and great looks in mind.

Providing horsepower and torque gains throughout the powerband, while improving aesthetics in the engine bay, with OEM+ fit and finish. Manufactured from carbon fiber; for strength, light weight, and long lasting great looks.

***Be sure to clean out any intake related components to remove any possible contaminants.**

Installation Spiciness Rating: MILD



Installation of your 034Motorsport X34 Full Intake System is a straightforward process that will take approximately 1 hour to complete.

Supplied Parts:

- X34 Carbon Fiber Intake Air Duct
- X34 Carbon Fiber Lower Air Box
- X34 Carbon Fiber Airbox
- X34 Carbon Fiber Inlet Pipe
- 034 4" Air Filter
- Heat Shield w/ hardware
- Silicone Coupler
- (2x) Hose Clamps
- (8x) M4 Socket Head Cap Screws
- (8x) M4 Washers

Tools Needed:

- T30 Torx bits
- T25 Torx bits
- 8mm Socket
- 7mm Socket
- 4mm Allen
- 3mm Allen
- Pliers, or spring clamp pliers

About This Guide

This Install Guide documents the installation process of the open airbox version, on a 2018 Audi TTRS and RS3. There may be minor differences depending on specific vehicle, market, options, etc.

Installation is identical for the closed box version.

Getting Started

Confirm you have received all the parts included with your purchase by reading the complete guide, if there are missing components,

Install Steps

Step 1

Open the hood to access the intake system.



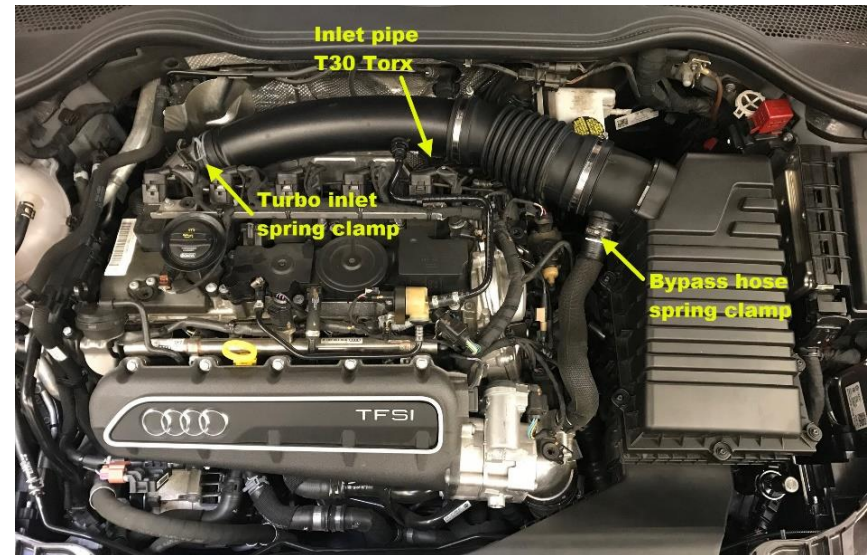
Step 2

Remove the engine cover.



Step 3

Using a pair of pliers, or spring clamp pliers, loosen the spring clamps on the bypass hose and disconnect hose from OE intake.



Step 4

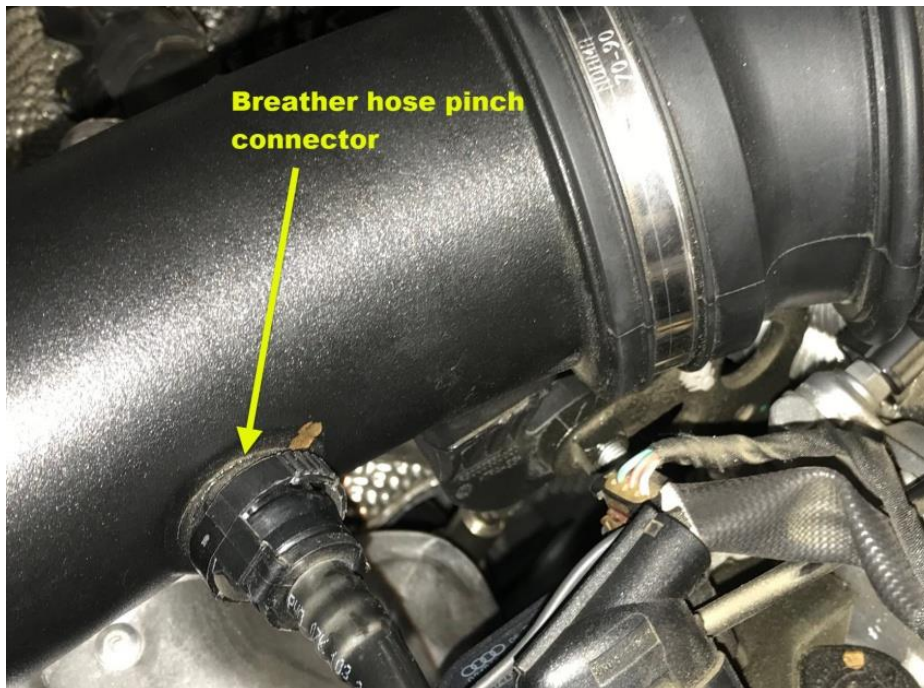
Using the same set of pliers, loosen the spring clamp at the turbo inlet and slide the clamp up the inlet pipe and off the coupler.

Step 5

Using the T30 Torx bit, remove the bolt securing the inlet pipe to the bracket above the exhaust manifold. This is accessible from the back, under the inlet pipe. Save bolt for heat shield installation.

Step 6

Disconnect the breather hose by pinching the connector and pulling it out of the inlet pipe.



Step 7

Be careful not to break the plastic stud, unclip DSG vent from lower air box. The metal clip can be removed from the plastic mount (it will not be re-used).



Step 8

Remove the two T25 Torx screws securing the ends of the inlet air duct.



Step 9

Move duct back, and then up, to remove.



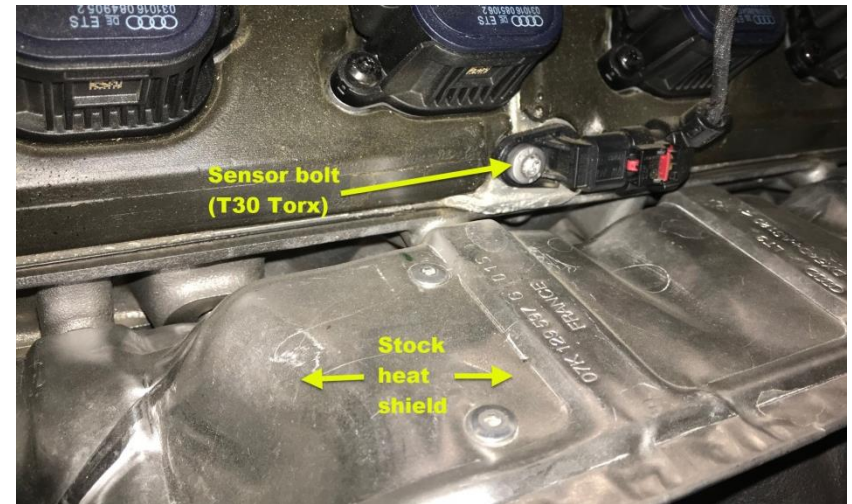
Step 10

The entire stock intake assembly (airbox and intake tube) can now be lifted out. A sharp pull upwards on the airbox will pop it off of the mounting studs.



Step 11

Using the T30 Torx bit, remove the bolt securing this sensor on the backside of the head, above the stock heat shield. This bolt will be re-used to mount the 034 heat shield.



Step 12

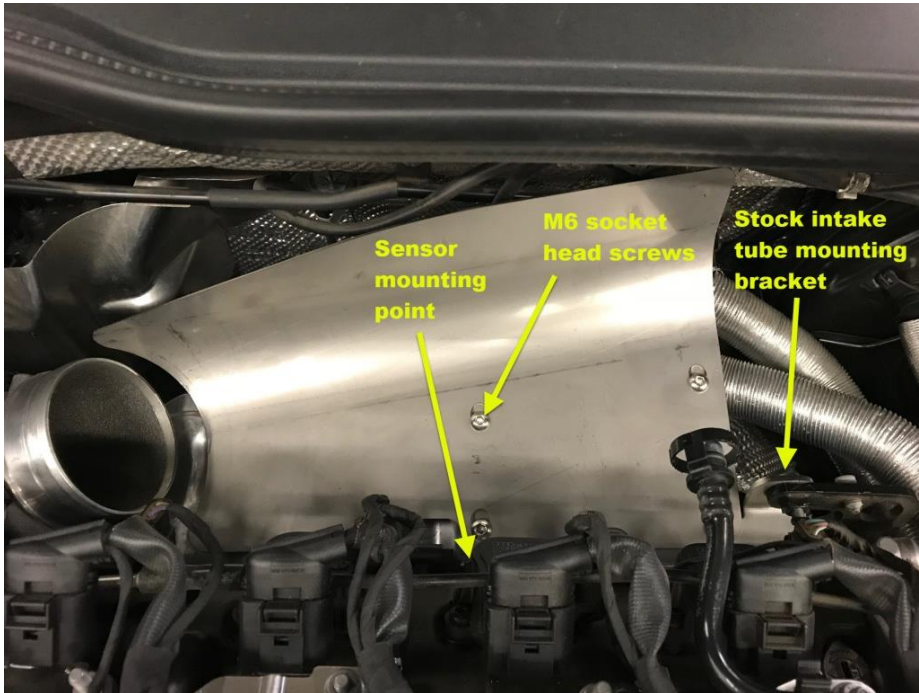
Using a 4mm Allen wrench and the supplied M6 button head cap screws, assemble the heat shield.



Step 13

Install the heat shield by attaching to the stock inlet tube mounting bracket (Step 6), and the head sensor (Step 10). Shield location can be adjusted by loosening the M6 button head cap screws. Make sure wiring along the firewall does not contact the edge of the shield.

NOTE: For the 4" tube version, depending on what turbo inlet is being used (stock or 4" aftermarket), the 034Motorsport heat shield may need a little tweaking/bending in order to clear the silicone/inlet/clamp at the tube.



Step 14

Install silicone coupler to turbo inlet. Tighten hose clamp with 7mm socket.



Step 15

Insert intake tube through the hole in the carbon fiber airbox top.



Step 16

Rotate intake tube within airbox frame and install the air filter. Using an 8mm socket, tighten hose clamp.

NOTE: Do not over-tighten, as this may damage the carbon tube. It does not have to be very tight, just snug.



Step 17

Remove the three grommets and the water drain from the bottom of the stock airbox.

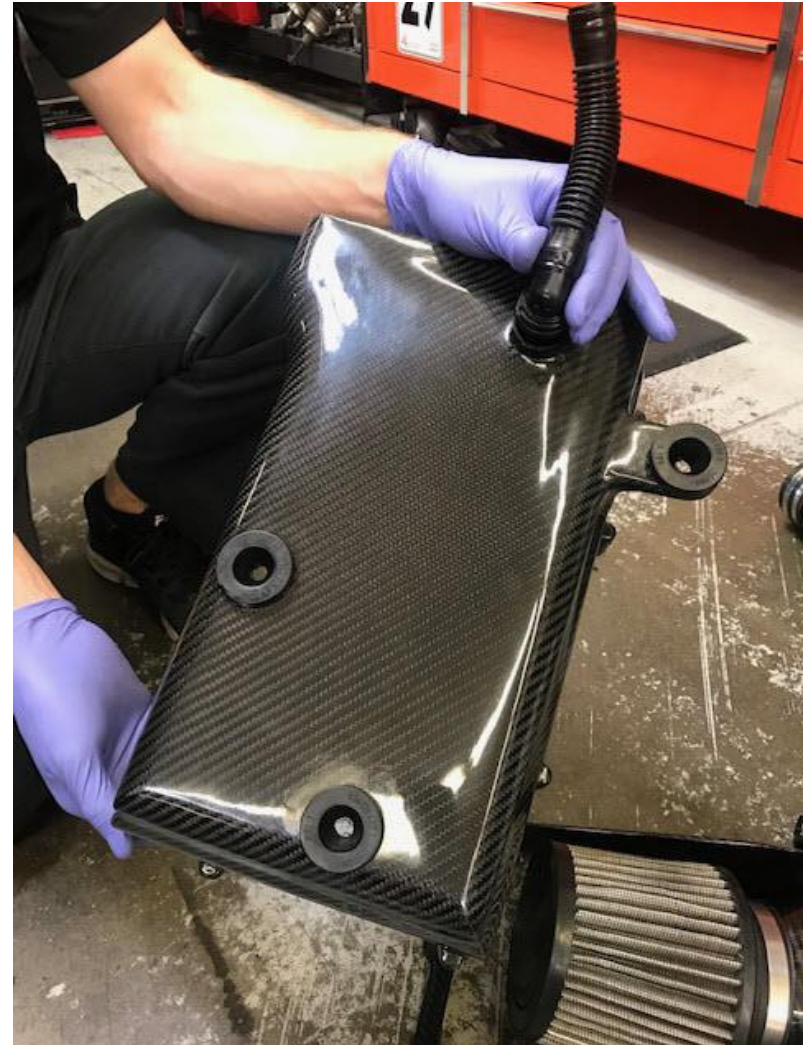
Note: the drain line is removed by pinching the connector.



Step 18

Transfer the grommets and drain line to the 034Motorsport Carbon Lower Box.

Note: spraying the grommets with a little silicone, or soapy water, will help with installation.



Step 19

Using the supplied M4 screws, assemble the upper and lower airbox sections. Tighten the cap screws to **3 Nm**.



Step 20

Set airbox assembly lightly into place. Insert the air duct into the lower airbox.



Step 21

Connect the intake pipe to the turbo inlet silicone coupler. Do not tighten yet.



Step 22

Connect the breather hose pinch connector to the inlet pipe.



Step 23

Reconnect the bypass hose to the intake pipe and reposition the clamp.



Step 24

Push down on the airbox to pop the grommets onto the mounting studs.



Step 25

Tighten the hose clamp at the turbo inlet.

NOTE: Do not over-tighten, as this may damage the carbon tube. It does not have to be very tight, just snug enough to make air-tight.



Step 26

Position the intake duct to align the mounting holes and secure with the provided M4 button head cap screws (3mm hex). Tighten to **3 Nm**.



Step 27

Insert DSG vent/mount into 6mm hole in lower airbox.



Step 28

***Double check all connections are tight.**

Step 29

Reinstall engine cover.



Step 30

You're done. Enjoy your new 034Motorsport X34 Carbon Intake System!

