

**034 MOTOR SPORT**

The 034Motorsport Stainless Steel Racing Downpipe for Mk8 Golf R & Audi 8Y S3 models equipped with EA888 Gen 4 2.0T engines is the ultimate upgrade over the factory downpipe.

Designed to replace the restrictive factory downpipe and catalytic converter to yield increased horsepower and torque throughout the powerband, reduced turbocharger lag, and an enhanced exhaust note, this is the ultimate downpipe solution for the discerning Audi/Volkswagen enthusiast.

Installation Spiciness Rating: MEDIUM

Installation of your 034 High Flow Cat is a straightforward process that will take approximately 3 hours to complete.

Supplied Parts:

- (1x) High Flow Downpipe
- Multi-piece Midpipe
- (3x) Exhaust Clamps

Tools Needed:

- 22mm Oxygen sensor tool or wrench
- 13mm Wrench
- 19mm Socket
- 18mm Socket
- 16mm Socket
- 13mm Socket
- 10mm Socket
- 8mm Allen bit
- 6mm Allen bit
- 5mm Allen bit
- Flathead Screwdriver
- Transmission Jack
- Bunjee Cord

About This Guide

This Install Guide documents the installation process on an Audi 8Y S3. There may be minor differences depending on specific vehicle, market, options, etc.

Getting Started

Confirm you have received all the parts included with your purchase by reading the complete guide, if there are missing components, please contact:

Install Steps

Step 1

Open your hood to access the engine.



Step 2

Remove the engine cover.

Step 3

Using an O2 sensor tool or 22mm wrench, remove the upper O2 sensor.



Step 4

Using a 6mm Allen, loosen and disconnect the v-band clamp securing the OEM downpipe to the turbo.



Step 5

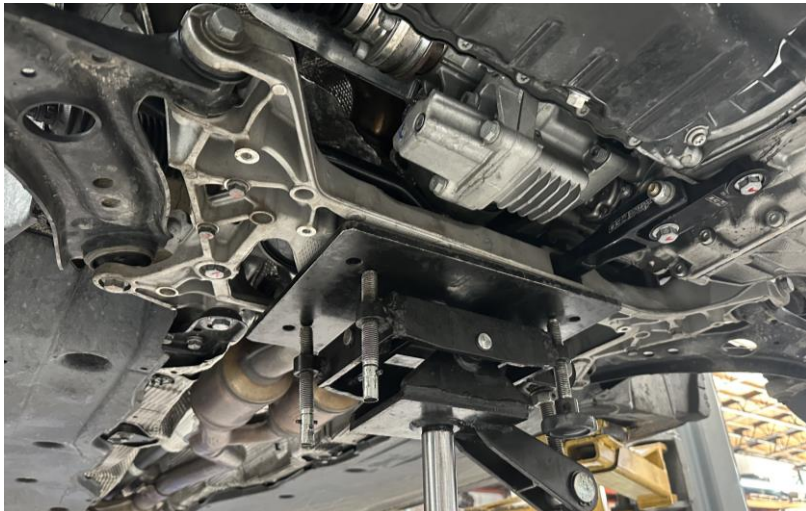
Raise the car to access the underside.

Step 6

Remove the front wheels.

**Step 7**

Position a transmission jack under the front subframe.

**Step 8**

Using a 10mm socket, remove the ride-height sensor nut.

**Step 9**

Unplug the ride-height sensor.



Step 10

Using a 19mm socket, remove the upper end link hardware.



Step 11

Using an 18mm socket, remove the dogbone mount hardware.



Step 12

Using an 18mm socket, remove the steering rack hardware.



Step 13

Using a 16mm socket, remove the chassis side of the subframe bracket.

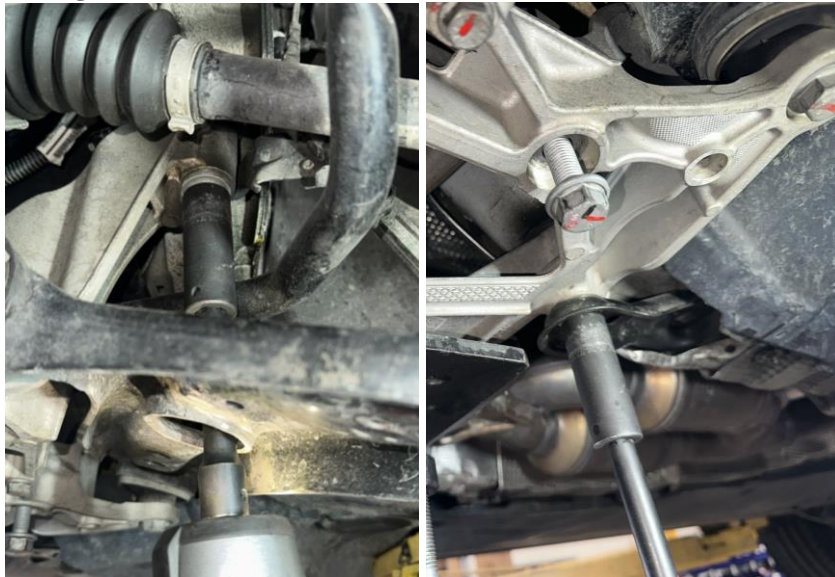


Step 14

Using a 15mm socket (034 ball joint) or 16mm socket (OEM ball joint), remove the ball joint hardware.

**Step 15**

Using an 18mm socket, remove the subframe hardware.

**Step 16**

Separate the lower control arm from the ball joints.

**Step 17**

Separate the steering rack clip from the subframe.



Step 18

Using a 13mm socket, remove the exhaust hanger bracket from the subframe.

**Step 19**

Slowly lower the subframe and move it aside.

**Step 20**

Support the steering rack with a bunjee cord.

**Step 21**

Using a 13mm socket, loosen the exhaust clamps.



Step 22

Using an O2 sensor tool or 22mm wrench, remove the lower O2 sensor.



Step 23

Using an 8mm Allen, remove the left side axle guard, **before trying to remove the downpipe hardware.**



Step 24

Using a 13mm wrench socket, remove the hardware securing the downpipe to the engine. (Remove shield first!)



Step 25

Carefully remove the OE downpipe.



Step 26

Install the 034 downpipe.

Step 27

Using a 13mm socket, loosely secure the HFC to the engine.



Step 28

Lower the car back down.

Step 29

Using a 6mm Allen, reinstall the v-band clamp.



Step 30

Using an O2 sensor tool or 22mm wrench, install the upper O2 sensor.



Step 31

Raise the car one last time.



Step 32

Using a 13mm socket, install and tighten the exhaust clamps for the mid-pipe assembly.

**Step 33**

Using a 13mm socket, fully secure the HFC to the engine.

**Step 34**

Using an O2 sensor tool or 22mm wrench, reinstall the lower O2 sensor.

**Step 35**

Bring the subframe back into position under the car and raise it back into place.

Notes:

The lower control arms can make this difficult. Aligning the steering rack was a pain, use a guide pin! Keep an eye out for any electrical plugs.



Step 36

Remove the bunjee cord supporting the steering rack.

**Step 37**

Reinsert the steering rack clip to the subframe.

**Step 38**

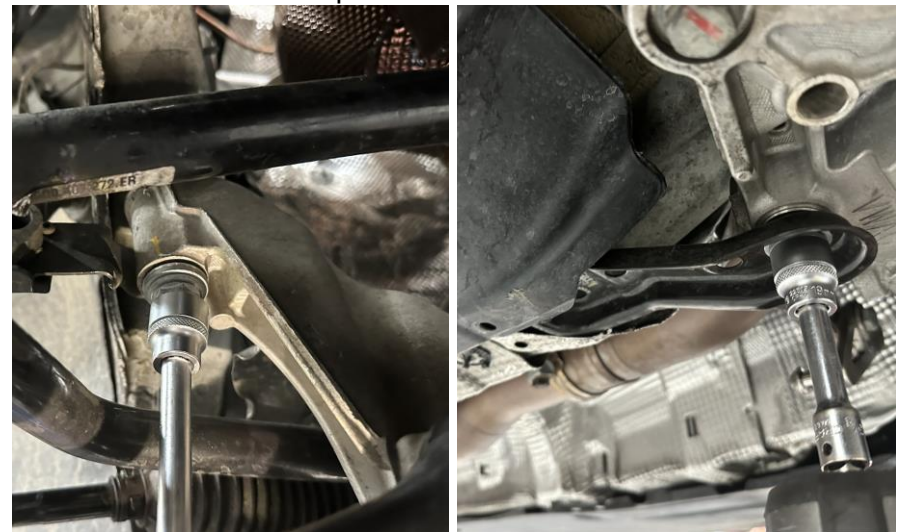
Using an 18mm socket, reinstall the steering rack hardware.

Torque to **70Nm +90°**.

**Step 39**

Using an 18mm socket, reinstall the subframe hardware.

Torque to **70Nm + 180°**.



Step 40

Using a 16mm socket, reinstall the chassis side of the subframe bracket. You can remove the transmission jack.

Torque to **20Nm + 90°**.

**Step 41**

Using an 18mm socket, reinstall the dogbone mount. (Be delicate with all subframe and engine mounted threads!)

Torque to **50Nm + 90°**.

**Step 42**

Remove the exhaust hanger bracket from the OE downpipe and transfer it to the 034 mounting plate. Using a 13mm socket, install the mounting plate to the midpipe, as well as the exhaust hanger bracket to the subframe. Torque to **20Nm**.

**Step 43**

Using an 8mm Allen, reinstall the left side axle guard.



Step 44

Align and reinstall the lower control arm from the ball joints using a 15 or 16mm socket. Torque to **70Nm + 180°**.

**Step 45**

Using a 10mm socket, reinstall the ride-height sensor.

**Step 46**

Connect the ride-height sensor.

**Step 47**

Using a 19mm socket, reinstall the upper end link hardware.
Torque to **40Nm**.



Step 48

Lower the car and reinstall the front wheels.



Step 49

Drop the car down and reinstall the engine cover.



Step 50

You're done! Enjoy the added performance.

